

Communication Products



Contents	Page
Atlas Gentech Profile & Warranty Terms	2
Communication Headset Research	3
Professional Headset Adaptors & Phones	4
Professional Cordless Headset Solutions	5
Professional Headsets	6-9
Specialty Headsets	9
Headset Accessories	10
SoHo Headset Solutions & Bluetooth Headsets	11
USB & Digital Computer Headsets & Adaptors	12
Analogue, Gaming & Computer Headsets	13
Mobile Headsets	14
2.4GHz & 5.8GHz Cordless Telephones	15
SoHo DECT Cordless Telephones	16
Deluxe SoHo DECT Cordless Telephones	17
SoHo DECT with TAM & 900MHz Cordless	18
Compact, Residential & Network Service Telephones	19
Speakerphones	20
Business Desktop & Monitor Telephones	21
Hospitality Telephones & System Add-ons	22
Specialty Telephones & Devices	23
Telephone Video Stations & IP Telephones	24
Answering Devices & ADSL Modems & Gateways	25
Audio Conferencing Systems	26-27
Personal RF Communication Products	28
Commercial RF Products & Personal Calculators	29
Business & Scientific Calculators	30
Manufacturer Profiles	31
Product Comparison Charts	32

TeleEXPRESS Limited was created in 1998 to service the increasing needs of New Zealand companies requiring the latest in telecom-munications technology.

The staff are dedicated to providing value-added services and products from the world's leading telecommunications suppliers.

To address the needs of its customers, TeleEXPRESS has been formed to carry out a broad range of functions that include order processing, distribution, invoicing, product support, and warranty.

TeleEXPRESS sells its products to both small and large companies throughout New Zealand and across many business sectors including industrial, telemarketing, financial, banking, health, education and government departments.

As an authorised reseller for leading brands such as **ALCATEL, AUDIOLINE, DORO, GE, PLANTRONICS, SIEMENS and VTECH**, TeleEXPRESS is in the unique position of being able to supply their customers with products that are fully supported, Telepermitted and compliant for use in New Zealand.

Express Service from TeleEXPRESS

Companies purchasing direct from TeleEXPRESS receive:

- 1) Free On site Product demonstrations (where available).
- 2) Free on-site product training from qualified staff.
- 3) Product delivered within 24-48 hours from receipt of an order.
- 4) Preferential Pricing including Specials as Offered.
- 5) Quick turn around time on product returns for servicing (48-72 hours).
- 6) Preferential pricing for out of warranty service work.
- 7) Quarterly newsletter with the latest product releases and news.
- 8) Worldwide sourcing of product. If we do not have it, we will try and get it for you, subject to New Zealand regulations.



Warranty Chart for Products Sold and Used in New Zealand

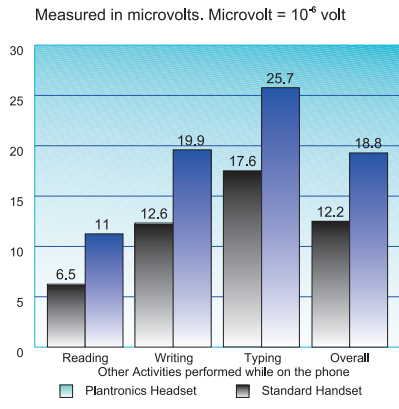
BRANDS & PRODUCTS	WARRANTY PERIOD	LIMITED WARRANTY TERMS
AASTRA Telephones	12 Months	Parts & Labour or Replacement for Workmanship
AETHRA Audio & Video Conferencing Systems	12 Months	Parts & Labour or Replacement by Audio Visual Com. via Atas Gentech
ALCATEL Telephones	12 Months	Parts & Labour or Replacement for Workmanship
AUDIOLINE Telephones, Cordless Telephones & Answering Machines	12 Months	Parts & Labour or Replacement for Workmanship
AURORA Calculators	12 Months	Parts & Labour or Replacement for Workmanship
BELCOM Audio Conferencing & Music On-Hold Systems	12 Months	Parts & Labour or Replacement for Workmanship
CLARITY Specialty Telephones & Products	12 Months	Parts & Labour or Replacement for Workmanship
DORO Telephones, DECT Cordless & Specialty Products	12 Months	Parts & Labour or Replacement for Workmanship
GE Telephones & Cordless Telephones	12 Months	Parts & Labour or Replacement for Workmanship
GIGASONIC Long Range Cordless Telephone	12 Months	Parts & Labour or Replacement for Workmanship
HEWLETT PACKARD Calculators	12 Months	Parts & Labour or Replacement by HP via Atlas Gentech
KONFTEL Audio Conferencing Systems	24 Months	Parts & Labour or Replacement by Audio Visual Com. via Atas Gentech
LG aria Telephone Systems	12 Months	Parts & Labour or Replacement for Workmanship
LG-Nortel IP Telephones & Video Telephones	12 Months	Parts & Labour or Replacement for Workmanship
MAXON Radio Telephones & Data Telemetry	12 Months	Parts & Labour or Replacement for Workmanship
MOTOROLA PMR Radios	12 Months	Parts & Labour or Replacement for Workmanship
ORICOM Telephones, Cordless Telephones & Specialty Products	12 Months	Parts & Labour or Replacement for Workmanship
PLANTRONICS Professional Corded Amplifiers & "H" Series Headsets	24 Months	Parts & Labour or Replacement for Workmanship
PLANTRONICS Cordless Amplifiers & StarBase 2010 & SoHo Headset & Packs	12 Months	Parts & Labour or Replacement for Workmanship
PLANTRONICS Analogue & Digital USB Computer Headsets	12 Months	Parts & Labour or Replacement for Workmanship
PLANTRONICS Bluetooth & Mobile Headsets	12 Months	Parts & Labour or Replacement for Workmanship
POLARIS Telephones	12 Months	Parts & Labour or Replacement for Workmanship
POLYCOM Audio Conferencing Systems	12 Months	Parts & Labour by Asnet Technologies, Auckland via Atlas Gentech
SAMSUNG Fax Consumables	3 Months	Parts & Labour or Replacement for Workmanship
SIEMENS DECT Cordless Telephones & Repeater	12 Months	Parts & Labour or Replacement for Workmanship
TELEDEX Telephones	12 Months	Parts & Labour or Replacement for Workmanship
THOMSON Telephones & ADSL Modems	12 Months	Parts & Labour or Replacement for Workmanship
VIALTA Telephone Video Stations & Digital Picture Frames	12 Months	Parts & Labour or Replacement for Workmanship
VODAVI Expresso! Voice Mail Systems	12 Months	Parts & Labour or Replacement for Workmanship
VTECH Cordless Telephones	12 Months	Parts & Labour or Replacement for Workmanship
ACCESSORIES for All of the Above Products	3 Months	Replacement for Workmanship

TeleEXPRESS Limited
 87 Carbine Road, Mt. Wellington, Auckland
 P.O. Box 14-683, Panmure, Auckland
 Telephone: (09) 574-2244
 Toll Free Fax: 0800-110-126
 Email: sales@teleexpress.co.nz
 Website: www.teleexpress.co.nz

Headset Efficiency & Productivity Guide

Physical & Productivity Benefits Validated. Headsets proven to reduce muscle tension up to 41%!

Results of a study conducted at Santa Clara Valley Medical Centre in San Jose, CA, provide strong evidence that office and telephone professionals can reduce neck, shoulder and upper back muscle tension as much as 41% by using headsets.



During a three month study, 62 people (33 women and 29 men), ranging from 20 to 63 years old, were involved in tests that evaluated the various levels of muscle tension resulting when office workers engage in other tasks while using the telephone. Study participants, all of whom used the telephone a minimum of three hours a day, were employed in a variety of professions from attorneys, reporters and consultants to small business owners, sales and customer support, engineering and financial operations.

Plantronics headsets improve workplace efficiency and productivity by up to 43%!

In a commissioned study, the firm of H.B. Maynard & Co concluded that adding hands free Plantronics headsets to conventional office telephones substantially improves productivity and overall call volume while reducing phone related employee downtime and physical discomfort. In the course of the study, more than 2,000 telephone transactions were observed and recorded on a time/motion basis at four firms over an eight day study period. Workgroups studied included inside sales people, travel agents, technical sales support personnel and stockbrokers with previous headset experience.

The results showed that workers equipped with Plantronics headsets had an overall productivity increase of up to 43% over the control group. Time spent in telephone related work activities was reduced substantially. Repeat calls were made without interruption, and ordinarily time intensive tasks such as typing on a PC were performed far more quickly and efficiently with Plantronics headsets. Not only was a reduced error rate and improved service record noted, but workers on the phone full-time with Plantronics headsets placed an average of 16 more calls per day than those using traditional handsets. Finally, workers equipped with Plantronics headsets reported higher morale, lower fatigue levels and fewer phone related physical complaints. After more than a week of using Plantronics headsets they couldn't imagine going back to using cumbersome handset phones.

In the first half of the study, participants were asked to use a conventional handset while performing a series of tasks including reading, note taking and typing on a computer. In the second half, participants used a Plantronics headset over phone handsets, providing the first scientific evidence that validates the physical benefits of headsets in reducing neck and upper back muscle tension. In today's demanding work environments, employers and employees alike can benefit from using headsets, resulting in lower medical costs and happier, more productive workers.

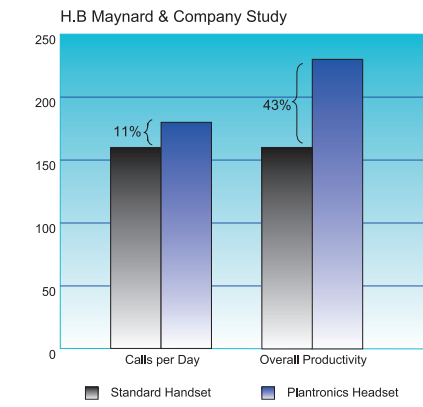
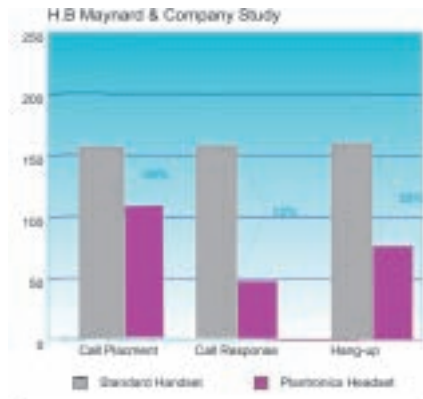
Activities	Significance
Reading*	Headset users experienced 41% less muscle tension than handset users.
Writing*	Headset users experienced 36.6% less muscle tension than handset users.
Typing*	Headset users experienced 31.4% less muscle tension than handset users.
Overall**	OVERALL: HEADSET USERS EXPERIENCED 35% LESS MUSCLE TENSION THAN HANDSET USERS.

* % difference between headset and handset means microvolt measurements across all muscle groups.
** Overall mean comparison, using average reading, writing and typing mean microvolt measurements.

Plantronics headsets endorsed by:



American Physical Therapy Association



Headset Efficiency Guide

Use this chart to calculate how much money a Plantronics headset can save your business?

STEP 1.
Use this chart to determine your productivity increase and time savings.



STEP 2.
Use this chart to calculate your payback and dollar savings.

Calculations	Example	Actual
1) % workday spent on phone	50%	%
2) Mins saved per day (see chart)	26.4 mins	mins
3) Total Hours saved per day (line 2 divided by 60)	0.44 hrs	hrs
4) Hourly Labour Rate	\$9.00	\$
5) Total Labour Savings per Day per Headset (Line 3 x Line 4)	\$3.96	\$
6) Total Labour Saving per Month per Headset (line 5 x 21 working days)	\$83.16	\$
7) Number of Headset Users	10	
8) Total Savings per month (line 6 x line 7)	\$831.60	\$

Headset Investment Cost		
9) Cost per Headset	\$200	\$
10) Total Investment (line 7 x line 9)	\$2000	\$
Headset Payback Period		
11) Payback Period (line 10 divided by line 8)	2.4 mos	mos
12) 1st Year Headset Savings (12 mos - line 11 x line 8)	\$7983.36	\$
13) Subsequent Annual Savings (line 8 x 12 mos)	\$9979.20	\$

How to Select the Right Headset for You.

The Following chart has been designed to help assess your headset application and work environment. This enables you to select the headset that is best for you personally.

Usage & Environment	Recommended Headset
Working in an Open Plan Office Area	H31, H41, H51, H51N, H61, H61N, H91, H91N, H101, H101N, H141, H141N, H171, H171N, H251, H251N, H261 & H261N
Need to confer when taking/making a call	H31, H41, H51, H51N, H61, H61N, H91, H91N, H101, H101N, H141, H141N, H171, H171N, H251, H251N, H261 & H261N
Reception Area	H31, H41, H81, H141 & H171
Noisy Reception Area	H41N, H81N, H141N & H171N
Intensive but Short Duration Calls	H41, H41N, H81, H81N, H141, H141N, H171 & H171N
Executive or SoHo Use	H81, H131N, H132N, H171, H351, H351N, H361 & H361N
Headsets are shared with other staff	H51, H51N, H61, H61N, H91, H91N, H101, H101N, H251, H251N, H261 & H261N
Emergency Services	H31, H61, H61N, H101, H101N, H261, H261N
Noisy Environments where calls are recorded	H31, H51N, H61N, H91N, H101N, H141N, H171N, H251N, H261N, H351N & H361N
Heavy PC Users/Internet Telephony	.Audio 350, 360 370, 500USB, 510 USB, 550DSP, DSP400 & DSP500
Cellular, Cordless or DECT Users	Bluetooth & Mobile Headsets
Usage & Environment	Recommended Adaptor or Phone
ACD & Consoles	P10 & M12E
Tone Commander & Older Systems	M12
Modern Telephone Systems	M12E
Analogue Telephones	M12E
Executives & Professionals	M12E, MX10, DA55, DA60, CA40, CS60, CS60USB, CS70, Voyager 510 & CT12
SoHo (Small Office & Home Office)	Doro Congress 100, 200 & 305, StarBase 2010, S12, T10, CT11 & CT12
General Business	M12E, DA40, DA55, StarBase 2010, CA40, CS60, CS60USB, CS70, CT11 & CT12
Call Centres	M12E, MX10, DA55, DA60, StarBase 2010, CA40, CS60, CS60USB, CS351, CS351N & CS361N
Telemarketing	M12E, StarBase 2010, CA40, CS60, CS60USB, CS351, CS351N & CS361N
Call Centre Supervisors	M12E, MX10, DA55, DA60, CS60, CS60USB, Voyager 510, CS70 & CT12
Sales Managers	M12E, MX10, DA40, DA55, DA60, CA40, CS60, CS60USB, Voyager 510, CT11 & CT12
Retail or Warehouse	CT11 & CT12
Simultaneous Telephone and PC Work	MX10, DA40, DA55 or DA60 & "H" Headset

© 2004 Plantronics, Inc. All rights reserved. Plantronics, the logo design, Plantronics & the logo design combined, AcuSpeak, .Audio, Call Clarity, Cat72, Cat132N, DuoPro, DuoSet, Encore, Firefly, Flexfit, Flex Grip, Headset Switcher, Intellistand, Freehand, Mirage, PerSono Pro, Polaris, QuickAdjust, Quick Disconnect, SES, SoundGuard, Sound Guide, StarSet II, Supra, SupraPlus, TriStar Vista, Versatip and the clear color and curvature of the Plantronics voice tube are registered trademarks of Plantronics, Inc. The Bluetooth name and trademarks are owned by Bluetooth SIG, Inc. and are used under license. All other trademarks are the property of their respective owners.

Professional Headset Adaptors & Telephones



HL2 Lifter

Oli

PLANTRONICS A20

Deck Management System
 Designed & Engineered For:
 Full-Featured Plug-and-Play System with Seamless Telephone Integration sets up in minutes. Used with Most Analogue or Digital System Telephones. Great for use with telephones without a headset button.

Major Features

Professional Amplifier & Cord Management System
 Headset Stand with Oli on-line Indicator Lamp
 Audible/ Visual Cues for Transmit & Receive Volumes
 Tone Control and Mute
 SoundGuard® Plus™ & Call Clarity™ Systems
 Optional Accessories
 HL2 Lifter - Auto Lifts/Lowers handset off/on hookswitch



PLANTRONICS DA40

USB-to-Headset Adaptor
 Designed & Engineered For:
 Use of Plantronics H Series Professional Headsets with Voice-over-IP (VoIP) softphones. Works with all USB-enabled PCs running Windows 2000/XP and later versions.

Major Features

Connects directly to the USB port of a PC
 Quick Disconnect connection to "H" Series Headsets
 2.5m from USB adaptor to Quick Disconnect



PLANTRONICS MX10

Headset Switcher™ Amplifier Adaptor
 Designed & Engineered For:
 Allows single headset use with a telephone and/or PC computer. Ideal for Computer Based Training, Computer Telephony and Interactive Games.

Major Features

Connects directly to a phone and a PC Sound Card, Modem, CD Player, Tape Recorder/Player.
 Receive Volume Control Dial & Mute Button
 Headset/Handset Selection Button
 Telephone/Computer Switch
 SoundGuard® Plus™ & Call Clarity™ Systems
 Quick Disconnect connection to "H" Series Headsets
 8' audio cable with 3.5mm plugs
 NOTE: Does not cater for Stereo sound.

POLARIS NRX3

Deluxe Headset Speakerphone
 Designed & Engineered For:
 Light to Heavy Use by Telemarketers, Call Centres, Sales Staff, Service Departments, SOHO

Major Features

Speakerphone
 LCD Display with Clock
 10 One-Touch & 10 Speed Dial EEPROM Memories
 Visual "In Use" & Incoming Call Indicators
 Message Wait Lamp
 Headset Port
 Data Port
 Handset or Headset Switchable
 Headset Volume Control & Handset Mute Button
 Latching Headset Mute Button with Indicator
 Recall, Last Number Redial & Pause Buttons
 Ringer Pitch and Volume Controls
 Wall Mountable (In-built Bracket)



PLANTRONICS M12E

VISTA™ Modular Adaptor
 Designed & Engineered For:
 Connects with Most Analogue or Digital System Telephones with a keypad on the base (NOTE: will not work with cordless telephones or telephones with keypads in handset)

Major Features

Adjustable Volume Control Dial & Mute Button
 Headset/Handset Selection Switch
 RF Shielding Technology
 SoundGuard® Plus™ & Call Clarity™ Systems
 Lightweight 10' Coil Cord with Quick Disconnect Plug for connection to "H" Series Headsets
 M12 also available with configuration settings for AT&T Systems and Tone Commander.



PLANTRONICS DA55

USB-to-Headset Adaptor
 Designed & Engineered For:
 Use of Plantronics H Series Professional Headsets with Voice-over-IP (VoIP) softphones. Works with all USB-enabled PCs running Windows 2000/XP and later versions.

Major Features

Connects directly to the USB port of a PC
 Quick Disconnect connection to "H" Series Headsets
 2.5m from USB adaptor to Quick Disconnect
 Digital Signal Processing (DSP) for clear audio
 Full Duplex Echo Suppression Technology
 SoundGuard® Plus™ & Call Clarity™ Systems
 Call Clarity™ technology maintains incoming volume
 Optional Accessory Pack
 In-line Volume and Mute Controls and PerSono™ Pro™ Supervisor-Agent Software



PLANTRONICS STARBASE 2010™

Deluxe Headset Telephone
 Designed & Engineered For:
 Light to Heavy Use by Telemarketers, Call Centres, Sales Staff, Service Departments, SOHO

Major Features

19 One-Touch Memories
 Visual "In Use" & Incoming Call Indicators
 Message Wait Lamp & Headset Port
 Handset or Headset Switchable
 Headset Volume Control & Handset Mute Button
 Latching Headset Mute Button with Indicator
 Recall, Last Number Redial & Pause Buttons
 Ringer Pitch and Volume Controls
 Wall Mountable (Screws)
 Includes Plantronics Quick Disconnect Cord

PLANTRONICS CT11

2.4GHz Cordless Telephone & Headset System
 Designed & Engineered For:
 Executives, Professionals, Call Centre Managers

Major Features

2.4GHz Digital Spread Spectrum Technology
 30 Communication Channels (Auto or Manual Selection)
 Operating Range: 30m indoors/75m outdoors
 Backlit LCD Display and Keypad on Remote Pack
 Recall, Last Number Redial, Pause, Mute & Hold
 AutoTalk Mode (pickup from Base Unit)
 Headset Volume (4), Ringer Volume (4) & Melody (6)
 100 Name & Number PhoneBook Memories
 10 Speed Dial Locations (part of PhoneBook)
 1 Hotline Priority One-touch Button
 Caller ID Ready (Network Service Required)
 Message Waiting LED (Network Service Required)
 One way Paging/Handset Locator
 Out of Range Warning and Low Battery Warning
 Built-in Headset Stand
 Talktime: Up to 5.5 Hours Standby Time: Up to 10 Days
 Includes Rechargeable 800mAh NiMH Battery, Detachable Belt Clip and MX150 Ear-mounted Headset.



PLANTRONICS P10

CHARGER™ Plug-Prong Amplifier Adaptor
 Designed & Engineered For:
 Use with operator consoles, Mitel SX10/20, Nortel SL1 and OPUS 512 PBXs and most Automatic Call Distribution (ACD) Systems.

Major Features

Connects directly to the PBX or ACD console
 Volume Control Dial
 Quick Disconnect connection to Headsets
 10' Coil Cord with Quick Disconnect Plug for connection of "H" Series Headsets



PLANTRONICS DA60

USB-to-Headset Adaptor with PerSono™ Pro™ Software
 Designed & Engineered For:
 Use of Plantronics H Series Professional Headsets with Voice-over-IP (VoIP) softphones. Works with all USB-enabled PCs running Windows 2000/XP and later versions.

Major Features

Connects directly to the USB port of a PC
 Quick Disconnect connection to "H" Series Headsets
 2.5m from USB adaptor to Quick Disconnect
 Digital Signal Processing (DSP) for clear audio
 Full Duplex Echo Suppression Technology
 SoundGuard® Plus™ & Call Clarity™ Systems
 Call Clarity™ technology maintains incoming volume
 In-line Volume and Mute Controls
 PerSono™ Pro™ Supervisor-Agent Software for audio optimization, call centre agent management, decibel monitoring, downloadable software updates.



POLARIS NRX2H

Headset Telephone
 Designed & Engineered For:
 Light to Heavy Use by Telemarketers, Call Centres, Sales Staff, Service Departments, SOHO

Major Features

On-Hook Dialling
 10 One-Touch & 10 Speed Dial EEPROM Memories
 Visual "In Use" & Incoming Call Indicators
 Message Wait Lamp
 Headset Port
 Data Port
 Handset or Headset Switchable
 Headset Volume Control & Handset Mute Button
 Latching Headset Mute Button with Indicator
 Recall, Last Number Redial & Pause Buttons
 Ringer Pitch and Volume Controls
 Wall Mountable (In-built Bracket)



PLANTRONICS CT12

2.4GHz Cordless Telephone & Headset System
 Designed & Engineered For:
 Executives, Professionals, Call Centre Managers

Major Features

2.4GHz Digital Spread Spectrum Technology
 30 Communication Channels (Auto or Manual Selection)
 Operating Range: 30m indoors/75m outdoors
 Backlit LCD Display and Keypad on Remote Pack
 Recall, Last Number Redial, Pause, Mute & Hold
 AutoTalk Mode (pickup from Base Unit)
 Headset Volume (4), Ringer Volume (4) & Melody (6)
 100 Name & Number PhoneBook Memories
 10 Speed Dial Locations (part of PhoneBook)
 1 Hotline Priority One-touch Button
 Caller ID Ready (Network Service Required)
 Message Waiting LED (Network Service Required)
 One way Paging/Handset Locator
 Out of Range Warning and Low Battery Warning
 Built-in Headset Stand
 Talktime: Up to 5.5 Hours Standby Time: Up to 10 Days
 Gold-plated connectors on remote pack & headset
 Includes Rechargeable 800mAh NiMH Battery, Detachable Belt Clip and PLANTRONICS FireFly Convertible Headset.

Professional Mobile Headset Solutions



Bluetooth™
Optional
HL10 Lifter

PLANTRONICS Voyager 510S

Bluetooth™ Headset Telephone System
Designed & Engineered For:
One Bluetooth Headset Solution for use in and out of the office for the mobile professional.

Major Features
Bluetooth™ v1.1 Headset/Hands-Free Profile
Seamlessly switch between your office analogue or digital phone and the voice-enabled Bluetooth mobile phone, PDA or laptop - with the touch of a button.
Maximum Operating Range: Up to 10m
Smart technology knows which device is ringing and enables calls using the device of your choice
Supports Adaptive Frequency Hopping (AFH)
Lightweight all day wearing comfort
Noise-cancelling Microphone with WindSmart® Technology
In-Use indicator light on Microphone Boom
Boom swivels for use on either ear
One-Touch call answer/end, Volume, Mute and voice-activated dialling (phone dependent)
Talktime: 6 Hours/Standby Time: 100 Hours
Headset folds-up for easy storage
Includes Voyager 510 Ear-Mounted Bluetooth Headset (15 grams) with Rechargeable Lithium-Ion Polymer Battery.
Optional Accessories
HL10 Handset Lifter, Oli Online Indicator Light, Car Lighter Adaptor, USB Headset Charger & Belt-clip Carry Pouch.



(Available mid-October)

PLANTRONICS Voyager 510S-USB

Bluetooth™ Headset with USB Adaptor
Designed & Engineered For:
Bluetooth Headset Solution for use with a Laptop or PC in and out of the office for the mobile professional.

Major Features
Bluetooth™ v1.2 Headset/Hands-Free Profile
Seamlessly switch between your office analogue or digital phone and the voice-enabled Bluetooth mobile phone, PDA or laptop - with the touch of a button.
Maximum Operating Range: Up to 10m
Smart technology knows which device is ringing and enables calls using the device of your choice
Supports Adaptive Frequency Hopping (AFH)
Lightweight all day wearing comfort
Noise-cancelling Microphone with WindSmart® Technology
In-Use indicator light on Microphone Boom
Boom swivels for use on either ear
One-Touch call answer/end, Volume, Mute and voice-activated dialling (phone dependent)
Talktime: 6 Hours/Standby Time: 100 Hours
Headset folds-up for easy storage
Includes Voyager 510 Ear-Mounted Bluetooth Headset (15 grams) with Rechargeable Lithium-Ion Polymer Battery, Desktop Charger, Bluetooth USB Adaptor, 1m USB Extension Cable, PerSonoCall™ Software & Travel Pouch.

Includes
HL10 Lifter

DECT



5

PLANTRONICS CA40CHP

DECT Cordless Adaptor & Headset System
Designed & Engineered For:
Executives, Professionals, Call Centre Managers
Major Features
DECT Digital Standard Cordless Technology
Long Range Mode: 50m indoors/150m outdoors
Short Range Mode: 20m indoors/30m outdoors
Transmit & Receive Auto Mute at range limit
Receive Tone & Transmit Volume Control
Remote: 2 LED Indicators/Base: 7 LED Indicators
Headset/Handset Selection
Receiver Volume & Ringer Control & Mute Button
Audible Ringer in Headset and on Remote Pack
Hookswitch Control (activates HL1 Handset Lifter)
Talktime: Up to 12 Hrs/Standby Time: Up to 100 Hrs
Charge Time: 3 Hours, Second Battery Charge Slot
Includes F142N FireFly Headset, Rechargeable NiMH Battery, Belt Clip & HL10 Telephone Handset Lifter.

Optional
HL10 Lifter

DECT



PLANTRONICS CS70

DECT Cordless Headset System
Designed & Engineered For:
Executives & Professionals
Major Features
DECT Digital Standard Cordless Technology
Operating Range: 50m indoors/100m outdoors
Out of Range Warning & Low Battery Warning
Receive Tone & Transmit Volume Control
Voice Tube Headset with Talk Button, Mute, Volume Control & In-Use Indicator
IntelliStand™ Function (requires HL10 Lifter)
Talktime: Up to 6 Hours/Standby Time: Up to 28 Hours
Charge Time: 1.5 Hours (80%) or 3 Hours (100%)
Headset Weight: 21 grams
Includes C70 Wireless Voice Tube Ear-mounted Headset, Rechargeable Lithium-Ion Polymer Battery, extra Eartips & Voice Tube.
Optional Accessory
HL10 Telephone Handset Lifter.

Optional
HL10 Lifter

DECT



PLANTRONICS CS60

DECT Cordless Headset System
Designed & Engineered For:
Executives, Professionals, Call Centre Managers
Major Features
DECT Digital Standard Cordless Technology
Operating Range: 50m indoors/100m outdoors
Out of Range Warning & Low Battery Warning
Receive Tone & Transmit Volume Control
Noise Cancelling Microphone Headset with Talk Button, Mute, Volume Control & In-Use Indicator
IntelliStand™ Function (requires HL10 Lifter)
Talktime: Up to 9 Hours/Standby Time: Up to 60 Hours
Charge Time: 1 Hour (55%) or 3 Hours (100%)
Headset Weight: 27.5 grams
Includes C60 Wireless Convertible Headset, Rechargeable Lithium-Ion Polymer Battery, extra headband & ear cushion.
Optional Accessory
HL10 Telephone Handset Lifter.

PLANTRONICS C65

DECT Cordless Headset
Designed & Engineered For:
Use with many models of DECT GAP cordless telephones or wireless PBX systems with 4 digit codes
Major Features
DECT Digital Standard Cordless Technology
Operating Range: 50m indoors/100m outdoors
Out of Range Warning & Low Battery Warning
Receive Tone & Transmit Volume Control
Noise Cancelling Microphone Headset with Talk Button, Mute, Volume Control & In-Use Indicator
Talktime: Up to 9 Hours/Standby Time: Up to 60 Hours
Charge Time: 1 Hour (55%) or 3 Hours (100%)
Headset Weight: 27.5 grams
Includes C60 Wireless Convertible Headset & Rechargeable Lithium-Ion Polymer Battery.

DECT

DECT

PLANTRONICS CS60-USB

DECT Cordless Headset System with USB Connector
Designed & Engineered For:
Executives, Professionals, Call Centre Managers that use a PC Softphone or VoIP Internet Service
Major Features
DECT Digital Standard Cordless Technology
Operating Range: 50m indoors/100m outdoors
Out of Range Warning & Low Battery Warning
Receive Tone & Transmit Volume Control
Noise Cancelling Microphone Headset with Talk Button, Mute, Volume Control & In-Use Indicator
IntelliStand™ Function (requires HL10 Lifter)
Talktime: Up to 9 Hours/Standby Time: Up to 60 Hours
Charge Time: 1 Hour (55%) or 3 Hours (100%)
Headset Weight: 27.5 grams
Includes C60 Wireless Convertible Headset, Rechargeable Lithium-Ion Polymer Battery & USB Connection Cable.

Optional
HL10 Lifter

DECT



PLANTRONICS CS351

DECT Cordless Voice Tube Monaural Headset System
Designed & Engineered For:
Call Centre Managers & Staff & other Heavy Headset Users
Major Features
DECT Digital Standard Cordless Technology
Operating Range: 50m indoors/100m outdoors
Out of Range Warning & Low Battery Warning
Receive Tone & Transmit Volume Control
Monaural Voice Tube Headset with Talk Button, Mute, Volume Control & In-Use Indicator
IntelliStand™ Function (requires HL10 Lifter)
Talktime: Up to 10 Hours/Standby Time: Up to 50 Hours
Charge Time: 1 Hour (50%) or 3 Hours (100%)
Headset Weight: 70 grams
Includes *SupraPlus* Wireless Monaural Voice Tube Headset & Rechargeable Lithium-Ion Polymer Battery.
Optional Accessory
HL10 Telephone Handset Lifter.

Optional
HL10 Lifter

DECT



PLANTRONICS CS351N

DECT Cordless Noise Cancelling Monaural Headset System
Designed & Engineered For:
Call Centre Managers & Staff & Heavy Headset Users
Major Features
DECT Digital Standard Cordless Technology
Operating Range: 50m indoors/100m outdoors
Out of Range Warning & Low Battery Warning
Receive Tone & Transmit Volume Control
Noise Cancelling Monaural Headset with Talk Button, Mute, Volume Control & In-Use Indicator
IntelliStand™ Function (requires HL10 Lifter)
Talktime: Up to 10 Hours/Standby Time: Up to 50 Hours
Charge Time: 1 Hour (50%) or 3 Hours (100%)
Headset Weight: 70 grams
Includes *SupraPlus* Wireless Noise Cancelling Monaural Headset & Rechargeable Lithium-Ion Polymer Battery.
Optional Accessory
HL10 Telephone Handset Lifter.

Optional
HL10 Lifter

DECT



PLANTRONICS CS361N

DECT Cordless Noise Cancelling Binaural Headset System
Designed & Engineered For:
Call Centre Managers & Staff & Heavy Headset Users
Major Features
DECT Digital Standard Cordless Technology
Operating Range: 50m indoors/100m outdoors
Out of Range Warning & Low Battery Warning
Receive Tone & Transmit Volume Control
Noise Cancelling Binaural Headset with Talk Button, Mute, Volume Control & In-Use Indicator
IntelliStand™ Function (requires HL10 Lifter)
Talktime: Up to 10 Hours/Standby Time: Up to 50 Hours
Charge Time: 1 Hour (50%) or 3 Hours (100%)
Headset Weight: 102 grams
Includes *SupraPlus* Wireless Noise Cancelling Binaural Headset & Rechargeable Lithium-Ion Polymer Battery.
Optional Accessory
HL10 Telephone Handset Lifter.

(Available Late September)



Professional Communication Headsets



PLANTRONICS H31

StarSet II® Headset

Designed & Engineered For:

Applications demanding top quality acoustics and all-day comfort such as emergency services or vital business discussions.

Major Features

Comfortable over-the-ear design

Versatip® eartip for custom fit & acoustic seal

Can be worn on either ear

Clear Adjustable Voice Tube

SoundGuard® Plus™ & Call Clarity™ Systems

Quick Disconnect™ Connector

Wearing Weight with Clothing Clip: 18 grams.



PLANTRONICS H41

Mirage® Headset

Designed & Engineered For:

Applications requiring all day comfort with good sound quality such as required by Professionals & Executives.

Major Features

Comfortable over-the-ear design

External Receiver rests on outer ear

Can be worn on either ear

Clear Adjustable Voice Tube

SoundGuard® Plus™ & Call Clarity™ Systems

Quick Disconnect™ Connector

Wearing Weight with Clothing Clip: 21 grams.



PLANTRONICS H41N

Mirage® Noise Cancelling Headset

Designed & Engineered For:

Professionals in shared work areas with elevated background noise.

Major Features

Comfortable over-the-ear design

External Receiver rests on outer ear

Can be worn on either ear

Noise Cancelling Uni-directional Microphone

Flexible Microphone Boom

SoundGuard® Plus™ & Call Clarity™ Systems

Quick Disconnect™ Connector

Wearing Weight with Clothing Clip: 20 grams.



PLANTRONICS H51

Supra® Monaural Headset

Designed & Engineered For:

Ideal for Heavy Users such as Receptionists, Telemarketers & Call Centre Staff.

World's #1 Selling Headset!

Major Features

Adjustable Durable Lightweight Headband

Soft Cushion Receiver over one ear

Can be worn on either ear

Clear Adjustable Voice Tube

SoundGuard® Plus™ & Call Clarity™ Systems

Quick Disconnect™ Connector

Wearing Weight with Clothing Clip: 42 grams.



PLANTRONICS H51N

Supra® Monaural Noise Cancelling Headset

Designed & Engineered For:

Ideal for Noisy Environments such as Reception Areas, Sales Departments and Call Centres.

World's #1 Selling Headset!

Major Features

Adjustable Durable Lightweight Headband

Soft Cushion Receiver over one ear

Can be worn on either ear

Noise Cancelling Uni-directional Microphone

Flexible Microphone Boom

SoundGuard® Plus™ & Call Clarity™ Systems

Quick Disconnect™ Connector

Wearing Weight with Clothing Clip: 43 grams.



PLANTRONICS H61

Supra® Binaural Headset

Designed & Engineered For:

Ideal for Heavy Users such as Receptionists, Telemarketers & Call Centre Staff.

World's #1 Selling Headset!

Major Features

Adjustable Durable Headband

Soft Cushion Receivers over both ears

Clear Adjustable Voice Tube

SoundGuard® Plus™ & Call Clarity™ Systems

Quick Disconnect™ Connector

Wearing Weight with Clothing Clip: 72 grams.



PLANTRONICS H61N

Supra® Binaural Noise Cancelling Headset

Designed & Engineered For:

Ideal for Noisy Environments such as Reception areas, Sales Departments or Call Centres. **World's #1 Selling Headset!**

Major Features

Adjustable Durable Headband

Soft Cushion Receivers over both ears

Noise Cancelling Uni-directional Microphone

Flexible Microphone Boom

SoundGuard® Plus™ & Call Clarity™

Quick Disconnect™ Connector

Wearing Weight with Clothing Clip: 74 grams.



PLANTRONICS H81

TriStar® Headset

Designed & Engineered For:

The lightest, most stable over-the-ear headset for Executives & Business Professionals.

Major Features

Fits over the ear - 3-point contact system

4 Sizes of User Selectable Earbuds

Can be worn on either ear

Clear Adjustable Voice Tube

SoundGuard® Plus™ & Call Clarity™

Quick Disconnect™ Connector

Wearing Weight with Clothing Clip: 14 grams.



PLANTRONICS H81N

TriStar® Noise Cancelling Headset

Designed & Engineered For:

Executives & Business Professionals working in busy environments.

Major Features

Fits over the ear - 3-point contact system

4 Sizes of User Selectable Earbuds

Can be worn on either ear

Noise Cancelling Uni-directional Microphone

Adjustable microphone boom

SoundGuard® Plus™ & Call Clarity™

Quick Disconnect™ Connector

Wearing Weight with Clothing Clip: 19 grams!

Professional Communication Headsets



PLANTRONICS H91

Encore™ Monaural Headset
 Designed & Engineered For:
 Moderate Users such as Receptionists or Sales Department Staff.
Major Features
Click-Stop Adjustable Headband & Turret
 Soft Cushion Receiver over one ear
 Can be worn on either ear
 Clear Adjustable Voice Tube
 SoundGuard® Plus™ & Call Clarity™
SES™ Sound Enhancement System
 Quick Disconnect™ Connector
 Wearing Weight with Clothing Clip: 52 grams.



PLANTRONICS H91N

Encore™ Monaural Noise Cancelling Headset
 Designed & Engineered For:
 Noisy Environments such as Reception areas or Sales Departments.
Major Features
Click-Stop Adjustable Headband & Turret
 Soft Cushion Receiver over one ear
 Can be worn on either ear
Noise Cancelling Uni-directional Microphone
 Flexible Microphone Boom
 SoundGuard® Plus™ & Call Clarity™
SES™ Sound Enhancement System
 Quick Disconnect™ Connector
 Wearing Weight with Clothing Clip: 54 grams.



PLANTRONICS H101

Encore™ Binaural Headset
 Designed & Engineered For:
 Moderate Users such as Receptionists or Sales Department Staff.
Major Features
Click-Stop Adjustable Headband & Turret
 Soft Cushion Receiver over both ears
 Clear Adjustable Voice Tube
Yokeless binaural cable design
 SoundGuard® Plus™ & Call Clarity™ Systems
SES™ Sound Enhancement System
 Quick Disconnect™ Connector
 Wearing Weight with Clothing Clip: 54 grams.



PLANTRONICS H101N

Encore™ Binaural Noise Cancelling Headset
 Designed & Engineered For:
 Noisy Environments such as Reception areas or Sales Departments.
Major Features
Click-Stop Adjustable Headband & Turret
Soft Cushion Receiver over both ears
Noise Cancelling Uni-directional Microphone
 Flexible Microphone Boom
Yokeless binaural cable design
 SoundGuard® Plus™ & Call Clarity™ Systems
SES™ Sound Enhancement System
 Quick Disconnect™ Connector
 Wearing Weight with Clothing Clip: 79 grams.



PLANTRONICS H131N

FreeHand™ Noise Cancelling Headset
 Designed & Engineered For:
 Designed exclusively for Business Professionals
Major Features
 Fits into the Outer Ear
Cushioned Earbud Miniature Receiver
Noise Cancelling Uni-directional Microphone
 Adjustable Microphone Boom
 SoundGuard® Plus™ & Call Clarity™ Systems
 Quick Disconnect™ Connector
Wearing Weight with Clothing Clip: 10 grams.



PLANTRONICS H132N

FreeHand™ Noise Cancelling Headset
 Designed & Engineered For:
 Designed exclusively for Business Professionals
Major Features
 Fits into the Outer Ear
Cushioned Earbud Miniature Receiver
Noise Cancelling Uni-directional Microphone
 Adjustable Microphone Boom
 SoundGuard® Plus™ & Call Clarity™ Systems
2m Cable to RJ11 Connector that plugs directly into VISTA M12 or M12E
Wearing Weight with Clothing Clip: 10 grams.



PLANTRONICS H141

DuoSet™ Convertible Headset
 Designed & Engineered For:
 Over-the-Head Stability or Over-the-Ear Convenience for the busy office professional or the SOHO Office marketer or manager.
Major Features
Fully Adjustable Ultra-Light Headband
Flexible Earhook
 Soft Cushion Receiver over one ear
 Clear Adjustable Voice Tube
 SoundGuard® Plus™ & Call Clarity™ Systems
 Quick Disconnect™ Connector
 Wearing Weight: Over-the-Ear - 22 grams
 Headband - 37 grams.



PLANTRONICS H141N

DuoSet™ Noise Cancelling Convertible Headset
 Designed & Engineered For:
 Over-the-Head Stability or Over-the-Ear Convenience for the busy office professional working in a Noisy Environment.
Major Features
Fully Adjustable Ultra-Light Headband
Flexible Earhook
 Soft Cushion Receiver over one ear
Noise Cancelling Uni-directional Microphone
 Adjustable Boom
 SoundGuard® Plus™ & Call Clarity™ Systems
 Quick Disconnect™ Connector
 Wearing Weight: Over-the-Ear - 22 grams
 Headband - 37 grams.



PLANTRONICS H151

DuoPro™ Over-the-Ear Headset
 Designed & Engineered For:
 Over-the-Ear Convenience for the busy office professional.
Major Features
Over-the-Ear Design with Cord Guide
Ergonomic, Flared, Adjustable Earloop
Speaker Pad balances off the ear
 Clear Adjustable Voice Tube
 SoundGuard® Plus™ & Call Clarity™ Systems
 Quick Disconnect™ Connector
 Wearing Weight: 26 grams.



Professional Communication Headsets



PLANTRONICS H151N

DuoPro™ Noise Cancelling Over-the-Ear Headset

Designed & Engineered For:

Over-the-Ear Convenience for the busy office professional working in a Noisy Environment such as a Call Centre or Sales Department.

Major Features

Over-the-Ear Design with Cord Guide

Ergonomic, Flared, Adjustable Earloop

Speaker Pad balances off the ear

Noise Cancelling Uni-directional Microphone

Anti-Twist Boom for mic positioning

SoundGuard® Plus™ & Call Clarity™ Systems

Quick Disconnect™ Connector

Wearing Weight: 45 grams.



PLANTRONICS H161

DuoPro™ Headband Headset

Designed & Engineered For:

Over-the-Head Stability for the busy office professional.

Major Features

Fully Adjustable Lightweight Headband with Double T-pad Design and Cord Guide

Ergonomic, Flared, Adjustable Earloop

Speaker Pad balances off the ear

Clear Adjustable Voice Tube

SoundGuard® Plus™ & Call Clarity™ Systems

Quick Disconnect™ Connector

Wearing Weight: 26 grams.



PLANTRONICS H161N

DuoPro™ Noise Cancelling Headband Headset

Designed & Engineered For:

Over-the-Head Stability for the busy office professional working in a Noisy Environment.

Major Features

Fully Adjustable Lightweight Headband with Double T-pad Design and Cord Guide

Ergonomic, Flared, Adjustable Earloop

Speaker Pad balances off the ear

Noise Cancelling Uni-directional Microphone

Anti-Twist Boom for mic positioning

SoundGuard® Plus™ & Call Clarity™ Systems

Quick Disconnect™ Connector

Wearing Weight: 45 grams.



PLANTRONICS H171

DuoPro™ Convertible Headset

Designed & Engineered For:

Over-the-Head Stability or Over-the-Ear Convenience for the busy professional.

Major Features

Fully Adjustable Lightweight Headband with Double T-pad Design and Cord Guide

Ergonomic, Flared, Adjustable Earloop

Speaker Pad balances off the ear

Clear Adjustable Voice Tube

SoundGuard® Plus™ & Call Clarity™ Systems

Quick Disconnect™ Connector

Wearing Weight: Over-the-Ear - 26 gms

Headband - 26 grams.



PLANTRONICS H171N

DuoPro™ Noise Cancelling Convertible Headset

Designed & Engineered For:

Over-the-Head Stability or Over-the-Ear Convenience for the busy office professional working in a Noisy Environment.

Major Features

Fully Adjustable Lightweight Headband with Double T-pad Design and Cord Guide

Ergonomic, Flared, Adjustable Earloop

Speaker Pad balances off the ear

Noise Cancelling Uni-directional Microphone

Anti-Twist Boom for mic positioning

SoundGuard® Plus™ & Call Clarity™ Systems

Quick Disconnect™ Connector

Wearing Weight: Over-the-Ear - 45 grams

Headband - 45 grams.



PLANTRONICS H251

SupraPlus™ Monaural Headset

Designed & Engineered For:

Ideal for Heavy Users such as Receptionists, Telemarketers & Call Centre Staff.

Major Features

Adjustable Durable Lightweight Headband

Soft Cushion Receiver over one ear

Can be worn on either ear

Clear Adjustable Voice Tube

Headband twists out of way for Quick Call pick-up

SoundGuard® Plus™ & Call Clarity™ Systems

Quick Disconnect™ Connector

Wearing Weight with Clothing Clip: 42 grams.



PLANTRONICS H251N

SupraPlus™ Monaural Noise Cancelling Headset

Designed & Engineered For:

Ideal for Noisy Environments such as Reception Areas, Sales Departments and Call Centres.

Major Features

Adjustable Durable Lightweight Headband

Soft Cushion Receiver over one ear

Can be worn on either ear

Noise Cancelling Uni-directional Microphone

Bendable Click-Stop Mic Boom

Headband twists out of way for Quick Call pick-up

SoundGuard® Plus™ & Call Clarity™ Systems

Quick Disconnect™ Connector

Wearing Weight with Clothing Clip: 43 grams.



PLANTRONICS H261

SupraPlus™ Binaural Headset

Designed & Engineered For:

Ideal for Heavy Users such as Receptionists, Telemarketers & Call Centre Staff.

Major Features

Adjustable Durable Headband

Soft Cushion Receivers over both ears

Clear Adjustable Voice Tube

Headband twists out of way for Quick Call pick-up

SoundGuard® Plus™ & Call Clarity™ Systems

Quick Disconnect™ Connector

Wearing Weight with Clothing Clip: 72 grams.



PLANTRONICS H261N

SupraPlus™ Binaural Noise Cancelling Headset

Designed & Engineered For:

Ideal for Noisy Environments such as Reception areas, Sales Departments or Call Centres.

Major Features

Adjustable Durable Headband

Soft Cushion Receivers over both ears

Noise Cancelling Uni-directional Microphone

Bendable Click-Stop Mic Boom

Headband twists out of way for Quick Call pick-up

SoundGuard® Plus™ & Call Clarity™ Systems

Quick Disconnect™ Connector

Wearing Weight with Clothing Clip: 74 grams.

Professional Communication Headsets



PLANTRONICS H351

SupraPlus™ SL Monaural Headset
 Designed & Engineered For:
 Ideal for Heavy Users such as Receptionists, Telemarketers & Call Centre Staff.
Major Features
 Adjustable Durable Lightweight Headband
 Leatherette Cushion Receiver over one ear
 Can be worn on either ear
 Clear Adjustable Voice Tube
 Headband twists out of way for Quick Call pick-up
 SoundGuard® Plus™ & Call Clarity™ Systems
 Quick Disconnect™ Connector
 Wearing Weight with Clothing Clip: 42 grams.



PLANTRONICS H351N

SupraPlus™ SL Monaural Noise Cancelling Headset
 Designed & Engineered For:
 Ideal for Noisy Environments such as Reception Areas, Sales Departments and Call Centres.
Major Features
 Adjustable Durable Lightweight Headband
 Leatherette Cushion Receiver over one ear
 Can be worn on either ear
 Noise Cancelling Uni-directional Microphone
 Bendable Click-Stop Mic Boom
 Headband twists out of way for Quick Call pick-up
 SoundGuard® Plus™ & Call Clarity™ Systems
 Quick Disconnect™ Connector
 Wearing Weight with Clothing Clip: 43 grams.



PLANTRONICS H361

SupraPlus™ SL Binaural Headset
 Designed & Engineered For:
 Ideal for Heavy Users such as Receptionists, Telemarketers & Call Centre Staff.
Major Features
 Adjustable Durable Headband
 Leatherette Cushion Receiver over one ear
 Clear Adjustable Voice Tube
 Headband twists out of way for Quick Call pick-up
 SoundGuard® Plus™ & Call Clarity™ Systems
 Quick Disconnect™ Connector
 Wearing Weight with Clothing Clip: 72 grams.



PLANTRONICS H361N

SupraPlus™ SL Binaural Noise Cancelling Headset
 Designed & Engineered For:
 Ideal for Noisy Environments such as Reception areas, Sales Departments or Call Centres.
Major Features
 Adjustable Durable Headband
 Leatherette Cushion Receiver over one ear
 Noise Cancelling Uni-directional Microphone
 Bendable Click-Stop Mic Boom
 Headband twists out of way for Quick Call pick-up
 SoundGuard® Plus™ & Call Clarity™ Systems
 Quick Disconnect™ Connector
 Wearing Weight with Clothing Clip: 74 grams.



PLANTRONICS POLARIS SERIES

Unamplified Headsets
 Designed & Engineered For:
 Designed for use with specific telephone systems such as the **Nortel Norstar, 5212 & Meridian 2216.**
Models Available
 P41-U10P Mirage
 P51-U10P Supra Monaural
 P51N-U10P Supra Monaural Noise Cancelling
 P61-U10P Supra Binaural
 P61N-U10P Supra Binaural Noise Cancelling
 P141-U10P DuoSet Convertible
 P141N-U10P DuoSet Noise Cancelling Convertible
 P251-U10P SupraPlus Monaural
 P251N-U10P SupraPlus Monaural Noise Cancelling
 P261-U10P SupraPlus Binaural
 P261N-U10P SupraPlus Binaural Noise Cancelling



H81-CIS



H91-CIS



H101-CIS

PLANTRONICS CISCO IP HEADSETS

Professional Headsets for use on CISCO IP Phones
 Designed & Engineered For:
 For use with the **CISCO 7940, 7960 & 7970 IP Phones**
Major Features
 M12 or M12e Vista Amplifier not required
 Headset connects directly into IP Phone
CISCO IP Phone Headset Models
 H81-CIS TriStar Over-the-Ear Headset
 H91-CIS Encore Monaural Headband Headset
 H101-CIS Encore Binaural Headband Headset



PLANTRONICS LG-Nortel aria SERIES

Professional Headsets for aria Digital Telephones
 Designed & Engineered For:
 Use with **LG-Nortel aria 7000 series** digital telephones such as the **LDP-7004D, LDP-7008D, LDP-7016D, LDP-7024D & LDP-7024LD.**
Models Available
 LDP51-U10P Supra Monaural
 LDP51N-U10P Supra Monaural Noise Cancelling
 LDP61-U10P Supra Binaural
 LDP61N-U10P Supra Binaural Noise Cancelling
 LDP141-U10P DuoSet Convertible
 LDP141N-U10P DuoSet Convertible Noise Cancelling
 LDP251-U10P SupraPlus Monaural
 LDP251N-U10P SupraPlus Monaural Noise Cancelling
 LDP261-U10P SupraPlus Binaural
 LDP261N-U10P SupraPlus Binaural Noise Cancelling



MS30



MS200



MS50



MS250

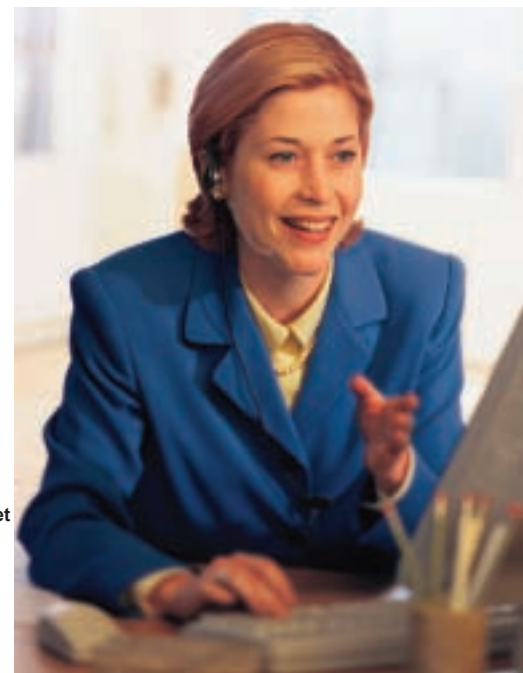


MS260

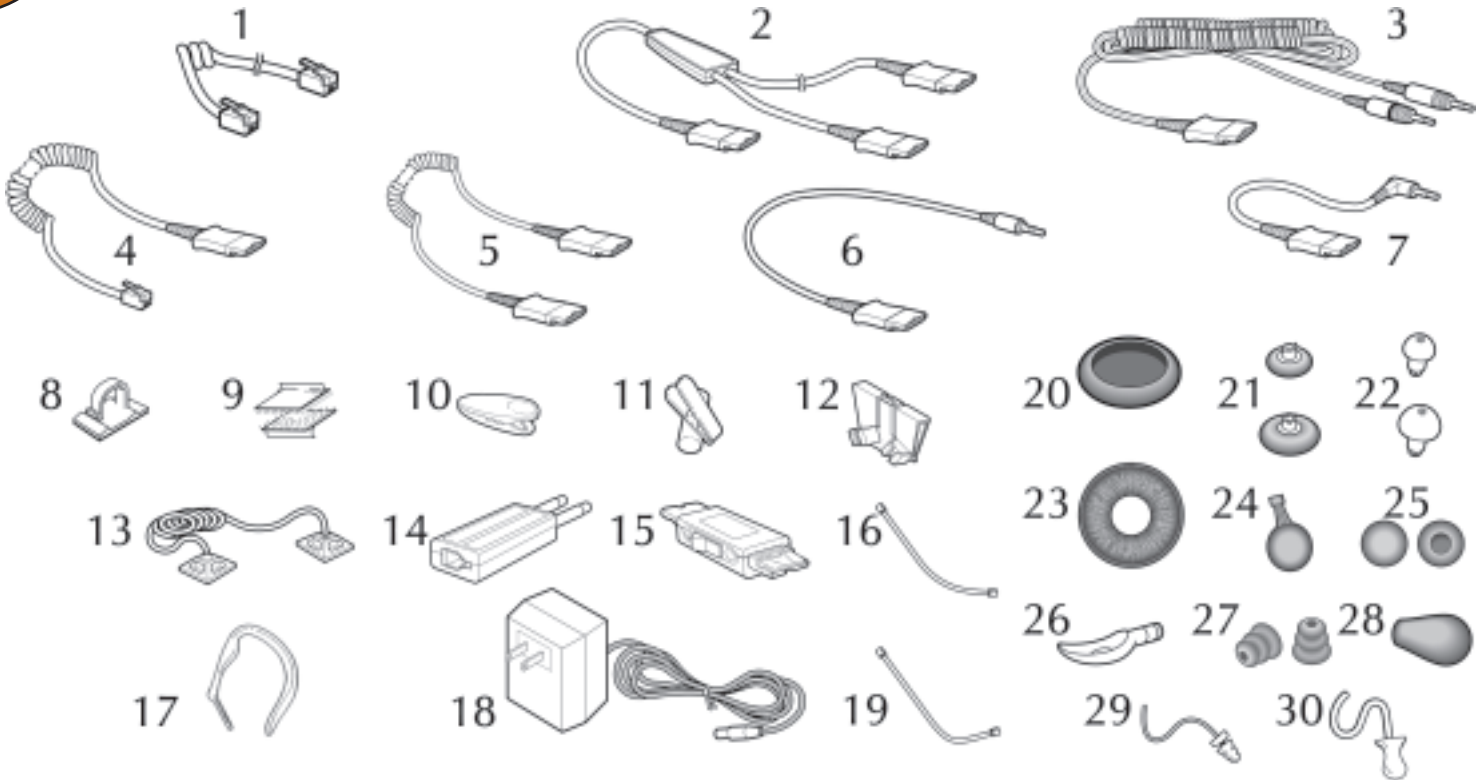
Indent Orders Only

PLANTRONICS AVIATION SERIES

Aviation Headsets
 Designed & Engineered For:
 Use by pilots and air traffic controllers
Models Available
 MS30 - Over-the-Ear Voice Tube Headset with Ear Plug
 MS50 - Headband or Eyeglass Clip Mounted Headset
 MS200 - Ear-mounted Monaural Noise Cancelling Headset
 MS250 - Noise Cancelling Monaural Headband Headset
 MS260 - Noise Cancelling Binaural Headband Headset



Professional Headset Accessories



PLANTRONICS Accessories

Professional Headset Accessories

Designed & Engineered For:

For use with PLANTRONICS Professional "H" Series headsets. Refurbishment Kits also available.

Accessories

1. 13827-17 - M12E Cable (Amplifier to Telephone)
2. 27019-01 - Training Y Adaptor with Q/D
3. 28959-01 - 3.5mm CAT Cable (Q/D to Dual 3.5mm)
4. 26716-01 - M12E Cable (Vista Amplifier to Q/D)
5. 26585-01 - StarBase Phone Cord (Phone to Q/D)
5. 26144-01 - 3m Extension Cord (Q/D to Q/D)
6. 40845-01 - 3.5mm Straight Cable (Q/D to Single 3.5mm)
7. SSP1106-02- 2.5mm Straight Cable (Q/D to Single 2.5mm)
8. 10778-00 - Quick Disconnect Cord Holder Clip (Single)
9. 17521-01 - M12E Velcro Desktop Stabilizer Pad
10. 29961-01 - Clothing Clip (all "H" Series models)



PLANTRONICS AttiTubes™

Coloured Voice Tubes

Designed & Engineered For:

For use with all PLANTRONICS headsets with replaceable voice tubes. Helps to identify headset for owner, Set-up Teams by tube colour, Easy to install and replace & adds some fun to a Call Centre Environment.

Coloured Voice Tubes

1. 17593-20 - StarSet II, Mirage & Supra (Orange)
2. 17593-30 - StarSet II, Mirage & Supra (Pink)
3. 17593-40 - StarSet II, Mirage & Supra (Green)
4. 17593-50 - StarSet II, Mirage & Supra (Purple)
5. 17593-60 - StarSet II, Mirage & Supra (Blue)
6. 17693-70 - StarSet II, Mirage & Supra (Rainbow 6)
7. 29960-20 - TriStar, Encore, DuoSet, DuoPro & SupraPlus (Orange)
8. 29960-30 - TriStar, Encore, DuoSet, DuoPro & SupraPlus (Pink)
9. 29960-40 - TriStar, Encore, DuoSet, DuoPro & SupraPlus (Green)
10. 29960-50 - TriStar, Encore, DuoSet, DuoPro & SupraPlus (Purple)
11. 29960-60 - TriStar, Encore, DuoSet, DuoPro & SupraPlus (Blue)
12. 29960-70 - TriStar, Encore, DuoSet, DuoPro & SupraPlus (Rainbow 6)

Rainbow Packs include 1 of each colour & 1 clear voice tube.

Accessories (Continued)

11. 06439-20 - StarSet II & Supra Clothing Clip (Single)
12. 40700-01 - Mirage & StarSet II Eyeglass Clip (Single)
13. 40697-01 - M12E Desktop Security Device
14. 18709-01 - M12E Modular to P10 Prong Adaptor
15. 27708-01 - Mute Switch for "H" Series Headset
16. 29960-01 - TriStar, Encore, DuoSet, DuoPro & SupraPlus Clear Voice Tube
17. 44026-02 - DuoSet Flexible Ear Hook
18. 7.5ADPTR - 7.5v Adaptor for Vista M10/M12/M12E
19. 17593-01 - StarSet II/Mirage/Supra Clear Voice Tube (Single)
20. 15729-05 - Supra & Encore Black Foam Ear Cushion (10 Pack)
20. 60967-01 - DuoPro Black Foam Ear Cushions (5 Pack)
20. 43937-01 - DuoSet Black Ear Cushions (10 Pack)
20. 40709-02 - SupraPlus Foam Donut Ear Cushion (10 Pack)
20. 61475/01 - DSP500 Ear Cushion (2 Pack)
20. 61476/01 - audio 45/DSP200 Ear Cushion (10 Pack)
20. 61478/01 - DSP300 Ear Cushion (2 Pack)
20. 48772/01 - CT11/MX150/M130/M135 Ear Cushion (2 Pack)
21. 29955-03 - TriStar Small Foam Belltip Earbud (5 Earbuds)
21. 29955-04 - TriStar Large Foam Belltip Earbud (5 Earbuds)
22. 29955-01 - TriStar Small Rubber Softtip Earbud (5 Earbuds)
22. 29955-02 - TriStar Large Rubber Softtip Earbud (5 Earbuds)
23. 19025-01 - Supra & Encore Black Leatherette Ear Cushion (2)
23. 67712/01 - SupraPlus Leatherette Ear Cushion (2 Pack)
23. 46186/01 - Leatherette Ear Cushion (Single) for H41, H41N, T10, CT12, M170 & M175.

Accessories (Continued)

24. 29814-03 - FreeHand Stabiliser Foam Ear Cushion (4 Pack)
25. 29814-01 - FreeHand Circular Foam Ear Cushion (5 Pack)
26. 10757-00 - Background Noise Suppressor (Single)
27. 41307-01 - TriStar Earhook Cushion (Single)
27. 60965-01 - DuoSet & DuoPro Cushioned Ear Loop (Single)
28. 24316-01 - Noise Cancelling Microphone Screen (Single)
29. 25640-01 - StarSet II Versatip (1 size fits all) (5 Pack)
30. 09288-01 - StarSet II Size 1 (Petite) Ear Plug (5 Pack)
30. 09288-02 - StarSet II Size 2 (Small) Ear Plug (5 Pack)
30. 09288-03 - StarSet II Size 1 (Medium) Ear Plug (5 Pack)
30. 09288-04 - StarSet II Size 1 (Large) Ear Plug (5 Pack)
30. 09288-05 - StarSet II Size 1 (X-Large) Ear Plug (5 Pack)



PLANTRONICS CABLE ADAPTORS

Telephone or System Dependent Cable Adaptors

Designed & Engineered For:

Use with any "H" Series Headset.

M12e or M12 Vista Amplifier not required.

Selected Cables

AP-1 (36664/01) Electronics Hookswitch for Siemens Optipoint Keyphones

A10-12 (33439/01) - For Nortel Meridian 3903 & 3904 and Nortel i2002 & i2004 (Phase 1).

HIP-1 (61804/01) - For Avaya 4600 IP Phones (Phase 1).

HIC-1 (49323/01) - For Avaya 4600 IP Phones (Phase 2).

POLARIS II (27190/01) - For NEC Xen "E" Series, Nortel i2002

& i2004 (Phase 2) and Nortel BCM-50 T7208 & T7316.

27190/01 - StarBase 2010 RJ11 to Quick Disconnect Cord



PLANTRONICS 63014-1

HL10 Arm Extender

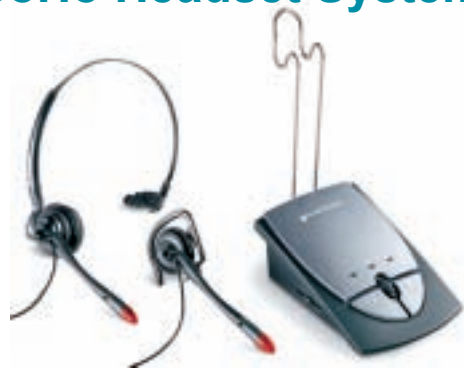
Designed & Engineered For:

For use with the HL10 Handset Lifter to extend the lifting arm which is required for some models of telephones.

Major Features

Attaches easily to HL10

Extends lifting arm by 100mm.



PLANTRONICS S12

SoHo Adaptor & Headset System
Designed & Engineered For:
 Light to Medium Use for Residential & SOHO
 Works with most types of Telephones
Major Features
Convertible Noise Cancelling Headband & Over-the-Ear Headset with connecting cord
Headset Stand
Call Clarity™ Technology filters phone line and room noise for clearer calls
FireFly™ On-Line Indicator on the Headset Mic Boom
 Adjustable Volume Controls
 Mute with Indicator
 Headset On/Off Switch
 Includes 3 AA Batteries



PLANTRONICS H142N

SoHo Convertible Headset
Designed & Engineered For:
 For use with the *Audioline Sensor 500* and *Doro Congress 100, Congress 200 & Congress 305 Headset Telephones.*
Major Features
Convertible Noise Cancelling Headband & Over-the-Ear Headset with RJ11 connecting cord
Noise Cancelling Uni-directional Microphone
 Adjustable Boom
 SoundGuard® Plus™ & Call Clarity™ Systems
Wearing Weight: Over-the-Ear - 22 grams
Headband - 37 grams.



Universal Bluetooth Adaptor Desktop Charging Stand

PLANTRONICS PULSAR 590A

Stereo Bluetooth™ Wireless Headset with Universal Bluetooth Adaptor
Designed & Engineered For:
 For use with Bluetooth™ enabled devices such as smartphones, cellular telephones or PDAs & audio devices.
Major Features
Bluetooth™ v2.0 Headset/Hands-Free Profile
Supports Advanced Audio Distribution Profile (A2DP), Audio/Video Remote Control Profile (AVRCP) and Generic Audio/Video Distribution Profile (GAVDP)
 Maximum Operating Range: Up to 10 metres
 Adjustable Foldable Headset Design with Soft Ear Cushions
Telescoping Voice Tube
Audio Track Forward/Backward & Play/Pause
 Volume Up/Down & Mute (Microphone or Speakers),
28mm Neodymium Headset Speakers
Talktime: Up to 12 Hours Listen Time: Up to 10 Hours
Standby Time: Up to 130 Hours
 Battery Charge Time: 2 Hours
Weight: 97.7 grams
 Includes Rechargeable Lithium-Ion Polymer Battery and Power Adaptor for charging battery, Desktop Charging Stand, In-Flight Audio Cable, Power Adaptor, USB Charging Cable, Universal Bluetooth Adaptor & Travel Case.



PLANTRONICS T10

SoHo Telephone & Headset System
Designed & Engineered For:
 Light to Medium Use for Residential & SOHO
Major Features
Convertible Noise Cancelling Headband & Over-the-Ear Headset with connecting cord
Headset Stand
 On-Line Indicator
 Adjustable Tone & Volume Controls
Alpha Numeric Dialpad
Recall (Flash) & Last Number Redial Buttons
 Mute with Indicator



PLANTRONICS EXPLORER 320

Bluetooth™ Wireless Headset
Designed & Engineered For:
 Executives, Professionals, Call Centre Managers for use with Bluetooth™ enabled devices such as smartphones, cellular telephones or PDAs.
Major Features
Bluetooth™ v1.2 Headset/Hands-Free Profile
 Maximum Operating Range: Up to 10 metres
 Adjustable Earloop (Left/Right Configurable)
 Call Control Button on Headset - Volume Control, Last Number Redial, Voice-activated Dialling & Call Answer/End
 In-Use Indicator Light
Talktime: Up to 8 Hours
Standby Time: Up to 240 Hours
 Battery Charge Time: 2 Hours
 Lightweight: 17 grams
 Includes Rechargeable Lithium-ion Battery and Power Adaptor for charging battery.



PLANTRONICS DISCOVERY 640

Bluetooth™ Wireless Headset
Designed & Engineered For:
 Executives, Professionals, Call Centre Managers for use with Bluetooth™ enabled devices such as smartphones, cellular telephones or PDAs.
Major Features
Bluetooth™ v1.2 Headset/Hands-Free Profile
 Maximum Operating Range: Up to 10 metres
Soft gel Ear Tips (3 sizes) for optimal comfort
 Optional Ear Stabilizer fits over the ear
Headset Controls - Volume, Mute, Last Number Redial, voice-activated dialling (user phone dependent)
Pocket Case vibrates with incoming calls
Talktime: Up to 5 Hours (15 Hours with AAA Charger)
Standby Time: Up to 70 Hours
 Battery Charge Time: 2 Hours
Super Lightweight: 9 grams
 Includes Rechargeable Lithium-ion Battery, AAA Battery Charger and Four Charging Adaptors that work with most common phone chargers (*Nokia, Sony-Ericsson, Motorola & Siemens*) & Carry Pocket.



PLANTRONICS T100

SoHo Headband Headsets
Designed & Engineered For:
 For use with the *Audioline Sensor 500* and *Doro Congress 100 & Congress 200 and Congress 305 Headset Telephones.*
Major Features
Headband Headset with RJ11 connecting cord
 Adjustable Boom
Wearing Weight: 42 grams.



PLANTRONICS VOYAGER 510

Bluetooth™ Wireless Headset
Designed & Engineered For:
 Executives, Professionals, Call Centre Managers for use with Bluetooth™ enabled devices such as smartphones, cellular telephones or PDAs.
Major Features
Bluetooth™ v1.2 Headset/Hands-Free Profile
 Maximum Operating Range: Up to 10 metres
 Lightweight Conformable Earloop (Left/Right Configurable)
 Noise Cancelling Microphone & WindSmart™ Technology
 In-Use Indicator Light
 Boom pivots for use on either ear
 Headset folds for easy storage
Intuitive controls for volume, mute call answer/end & voice-activated dialling (user phone dependent)
Talktime: Up to 6 hours
Standby Time: Up to 100 Hrs
Lightweight: 15 grams
 Includes Rechargeable Lithium-Ion Battery and Power Adaptor for charging battery.



PLANTRONICS DISCOVERY 645

Bluetooth™ Wireless Headset
Designed & Engineered For:
 Executives, Professionals, Call Centre Managers for use with Bluetooth™ enabled devices such as smartphones, cellular telephones or PDAs.
Major Features
DSP (Digital Signal Processing) Technology
Bluetooth™ v2.0 Headset/Hands-Free Profile
 Maximum Operating Range: Up to 10 metres
Soft gel Ear Tips (3 sizes) for optimal comfort
 Optional Ear Stabilizer fits over the ear
Headset Controls - Volume, Mute, Last Number Redial, voice-activated dialling (user phone dependent)
Pocket Case vibrates with incoming calls
Talktime: Up to 3 Hours (15 Hours with AAA Charger)
Standby Time: Up to 80 Hours
 Battery Charge Time: 2 Hours
Super Lightweight: 9 grams
 Includes Rechargeable Lithium-ion Battery, AAA Battery Charger and Four Charging Adaptors that work with most common phone chargers (*Nokia, Sony-Ericsson, Motorola & Siemens*) & Carry Pocket.

Analogue Gaming & Computer Headsets



PLANTRONICS .Audio 310
Analogue Monaural Headband PC Headset
Designed & Engineered For:
Speech recognition, voice command control, internet telephony and on-line chat in an office environment.
Major Features
Lightweight Flexible Monaural Headband
Noise Cancelling Microphone
Quick-Adjust™ Microphone Boom
Cushioned Swivel-mounted earpods
Two 3.5mm plugs connect to sound card/modem



PLANTRONICS .Audio 320
Analogue Binaural Headband Stereo PC Headset
Designed & Engineered For:
Excellent stereo sound and highly accurate voice transmission.
Major Features
Binaural Headband
Full Range Stereo Sound
Noise Cancelling Microphone
Quick-Adjust™ Telescoping Microphone Boom
Swivel-mounted pillow-soft earpods
Two 3.5mm plugs connect to sound card/modem



PLANTRONICS .Audio 330
Analogue Binaural Headband Stereo PC Headset
Designed & Engineered For:
Excellent stereo sound and highly accurate voice transmission.
Major Features
Binaural Headband
Full Range Stereo Sound
Noise Cancelling Microphone
Quick-Adjust™ Telescoping Microphone Boom
Swivel-mounted pillow-soft earpods
In-line Volume and Mute Controls
Two 3.5mm plugs connect to sound card/modem



PLANTRONICS .Audio 340
Analogue Behind-the-Head Binaural Stereo PC Headset
Designed & Engineered For:
Stereo sound and accurate speech recognition microphone in a stylish behind-the-head design.
Major Features
Binaural Behind-the-Head Headset
Full Range Stereo Sound
Noise Cancelling Microphone
Quick-Adjust™ Telescoping Microphone Boom
Soft, Swivel-mounted Ear Cushions
In-line Volume and Mute Controls
Two 3.5mm plugs connect to sound card/modem



PLANTRONICS .Audio 350
Analogue Binaural Headband Stereo PC Headset with 40mm Speakers
Designed & Engineered For:
High-quality stereo sound with maximum bass response headset for serious gamers and music lovers.
Major Features
Lightweight Flexible Binaural Headband
Full Range Stereo Sound
40mm Speakers for maximum bass response
Noise Cancelling Microphone
Quick-Adjust™ Telescoping Microphone Boom
Soft, Swivel-mounted Ear Cushions
In-line Volume and Mute Controls
Two 3.5mm plugs connect to sound card/modem



PLANTRONICS .Audio 360
Analogue Binaural Headband Multi-media PC Headset with 40mm Speakers
Designed & Engineered For:
High-quality stereo sound with maximum bass response headset for serious gamers and music lovers.
Major Features
Closed Ear Design Binaural Headband
Amplified cushioned earpods
40mm Speakers for maximum bass response
Noise Cancelling Microphone
Quick-Adjust™ Telescoping Microphone Boom
In-line Volume and Mute Controls
Two 3.5mm plugs connect to sound card/modem



PLANTRONICS .Audio 370
Analogue Binaural Headband Stereo PC Headset with 40mm Speakers
Designed & Engineered For:
High-quality stereo sound with maximum bass response headset for serious gamers and music lovers.
Major Features
Open-Ear Design Binaural Headband
Amplified cushioned earpods
40mm Speakers for maximum bass response
Noise Cancelling Microphone
Quick-Adjust™ Telescoping Microphone Boom
In-line Volume and Mute Controls
Two 3.5mm plugs connect to sound card/modem



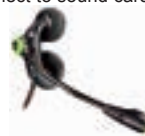
PLANTRONICS .Audio 450
Analogue Dual Ear-Mounted Stereo PC Headset
Designed & Engineered For:
High-quality stereo sound for on the go laptop users.
Major Features
Dual Ear-bud Flex-Grip™ Design
Full Range Stereo Sound
Noise Cancelling Microphone
Quick-Adjust™ Microphone Boom
In-line Volume and Mute Controls
Two 3.5mm plugs connect to sound card/modem



PLANTRONICS GameCom™ Halo 2
Xbox® Halo® 2 Edition Gaming Headset
Designed & Engineered For:
Long gaming sessions on Xbox® Halo® 2 Edition
Major Features
Optimized Speaker maximizes the audio
Ear Mounted Headset
Noise Cancelling Microphone
Quick-Adjust™ Microphone Boom
Single 2.5mm Plug connects to Xbox® Communicator or Xbox 360® Controller



PLANTRONICS GameCom™ X10
Xbox® Monaural Headband Gaming Headset
Designed & Engineered For:
Long gaming sessions on Xbox Live™.
Major Features
Monaural Headband
Extending Microphone Boom
In-line Volume & Mute Controls
Single 2.5mm Plug connects to Xbox® Communicator or Xbox 360® Controller



PLANTRONICS GameCom™ X20
Xbox® Ear-mounted Gaming Headset
Designed & Engineered For:
Long gaming sessions on Xbox Live™.
Major Features
FlexGrip™ Ear Mounted Headset
Noise Cancelling Microphone
Quick-Adjust™ Microphone Boom
In-line Volume & Mute Controls
Single 2.5mm Plug connects to Xbox® Communicator or Xbox 360® Controller



PLANTRONICS GameCom™ X30
Xbox® Ear-mounted Gaming Headset
Designed & Engineered For:
Long gaming sessions on Xbox Live™.
Major Features
Ear-Mounted Headset
Noise Cancelling Microphone
Adjustable Microphone Boom
Single 2.5mm Plug connects to Xbox® Communicator or Xbox 360® Controller

PLANTRONICS GameCom™ 1
Binaural Headband Stereo PC Gaming Headset
Designed & Engineered For:
Comfortable for long gaming sessions.
Major Features
Binaural Headband
Deep rich Stereo Sound
40mm speakers for maximum bass response
Noise Cancelling Microphone
Quick-Adjust™ Microphone Boom
In-line Volume and Mute Controls
Two 3.5mm plugs connect to sound card/modem



PLANTRONICS GameCom™ Pro 1
Binaural Headband Digital Stereo PC Gaming Headset
Designed & Engineered For:
Comfortable for long gaming sessions.
Major Features
Binaural Headband
Real-time equalization 32-bit digital audio processor
40mm speakers for maximum bass response
Noise Cancelling Microphone
Quick-Adjust™ Microphone Boom
In-line Volume and Mute Controls
USB Connector



PLANTRONICS M40

Mobile Earbud Headset
Designed & Engineered For:
 Occasional Use with Cellular or DECT Cordless Telephones while on the move around home, in the car or at work or play.
Major Features
 In-the-Ear Wearing Design
 Omni-directional In-line Microphone



PLANTRONICS MX150

Mobile Flex Grip™ Headset
Designed & Engineered For:
 Occasional Use with Cellular or DECT Cordless Telephones while on the move around home, in the car or at work or play.
Major Features
 Flex Grip™ design for stability and comfort
 AcuSpeak™ technology for clear conversations
 Bendable Noise-Cancelling Microphone Boom



PLANTRONICS MX300

Mobile Flex Grip™ Headset with Retractable Cord
Designed & Engineered For:
 Occasional Use with Cellular or DECT Cordless Telephones while on the move around home, in the car or at work or play.
Major Features
 Flex Grip™ design for stability and comfort
 WindSmart™ wind noise reduction technology
 RetractPro™ auto winder for tangle free cords

M210



M215



PLANTRONICS M210 & M215

Mobile Monaural Headband Headsets
Designed & Engineered For:
 Occasional Use with Cellular or DECT Cordless Telephones while on the move at home, in the car or at work or play.
Major Features
 Monaural Headband Headset
 Noise Cancelling Microphone
 Pivoting Mic Boom
 MX215 - In-line Answer/End Button & Volume Control

M110



M114



PLANTRONICS M110 & M114

Mobile Headband Headset
Designed & Engineered For:
 Occasional Use with Cellular or DECT Cordless Telephones while on the move around home, in the car or at work or play.
Major Features
 Adjustable Headband
 Noise-Cancelling Microphone
 RF Shielding Technology
 Volume Adjust Switch & Hearing Aid Compatible
 M114 - In-line Volume Control



PLANTRONICS M205

Mobile Earbud Headset
Designed & Engineered For:
 Occasional Use with Cellular or DECT Cordless Telephones while on the move around home, in the car or at work or play.
Major Features
 Ultralight and Compact
 Volume Control & One-Touch Mute Button
 Plantronics Flexfit™ improves stability
 M206-N1 Headset with built-in adaptor for Nokia® 3300 and 8000 series cellular phones with one-touch call Answer/End Button.



PLANTRONICS M60

Mobile Over-the-Ear Headset
Designed & Engineered For:
 Occasional Use with Cellular or DECT Cordless Telephones while on the move around home, in the car or at work or play.
Major Features
 Over-the-Ear Wearing Design
 Boom-mounted Microphone

MX200



MX203S



PLANTRONICS MX200 & MX203S

Mobile Flex Grip™ Headset & Stereo Headset
Designed & Engineered For:
 Occasional Use with Cellular or DECT Cordless Telephones while on the move around home, in the car or at work or play. MX203S for MP3-enabled phones.
Major Features
 Flex Grip™ design for stability and comfort
 Noise-Cancelling WindSmart™ Microphone
 MX203S - Integrated Call Answer/End Button

MX250



MX256



PLANTRONICS MX250 & MX256

Mobile Flex Grip™ Headsets
Designed & Engineered For:
 Occasional Use with Cellular or DECT Cordless Telephones while on the move around home, in the car or at work or play.
Major Features
 Flex Grip™ design for stability and comfort
 Noise-Cancelling WindSmart™ Microphone
 Pivoting Mic Boom
 MX256 - Integrated Call Answer/End Button



M130



M135

PLANTRONICS M130 & M135

Mobile Over-the-Ear Headset
Designed & Engineered For:
 Occasional Use with Cellular or DECT Cordless Telephones while on the move around home, in the car or at work or play.
Major Features
 Adjustable Earhook & Earbud Noise Shield
 Pivoting Noise-Cancelling Microphone
 RF Shielding Technology
 Volume Adjust Switch & Hearing Aid Compatible
 M135 - In-line Volume & Mute Controls
 M133-E1 - built-in adaptor for Sony Ericsson® T28 & T68i series cellular phones
 M133-N1 - built-in adaptor for Nokia® 3300 & 8000 series cellular phones
 M133-N2 - built-in adaptor for Nokia® 5100, 6100, 7100 & 3285 series cellular phones.
 M133-SM2 - for Siemens S440 colour DECT.



PLANTRONICS M220

Mobile Over-the-Ear Headset
Designed & Engineered For:
 Occasional Use with Cellular or DECT Cordless Telephones while on the move around home, in the car or at work or play.
Major Features
 Soft Flexible Earloop for stability and comfort
 Noise-Cancelling Microphone
 RF Shielding Technology
 M223-N1 Headset with built-in adaptor for Nokia® 3300, 6500 and 8000 series cellular phones with one-touch call Answer/End Button

Mobile Headsets



PLANTRONICS MX100

Mobile Flex Grip™ Headset
Designed & Engineered For:
 Occasional Use with Cellular or DECT Cordless Telephones while on the move around home, in the car or at work or play.
Major Features
 Flex Grip™ design for stability and comfort
 AcuSpeak™ technology for clear conversations
 Three interchangeable colour covers
 MX103-N1 - built-in adaptor for Nokia® 3300 & 8000 series cellular phones with one-touch call Answer/End Button.
 MX103-SM2 - for Siemens S440 colour DECT.



PLANTRONICS MX500

Mobile Flex Grip™ Headset
Designed & Engineered For:
 Occasional Use with Cellular or DECT Cordless Telephones while on the move around home, in the car or at work or play.
Major Features
 Next Generation Flex Grip™ design for stability and comfort
 WindSmart™ Voice Tube eliminates wind whistles & static
 Interchangeable, pivoting voice tubes ensure perfect positioning, sound and comfort

M170



M175



PLANTRONICS M170 & M175

Mobile Convertible Headband or Over-the-Ear Headset
Designed & Engineered For:
 Occasional Use with Cellular or DECT Cordless Telephones while on the move around home, in the car or at work or play.
Major Features
 Converts from Headband to Over-The Ear
 Adjustable Headband & 3 Earhook Sizes
 Noise-Cancelling Microphone
 Volume Adjust Switch & Hearing Aid Compatible
 M175 - In-line Volume & Mute Controls



PLANTRONICS MHA100

Mobile Headset Amplifier
Designed & Engineered For:
 For use with Plantronics Mobile Headset to amplify the audio in noisy environments or for hard-of-hearing people.
Major Features
 Works with any "M" series Mobile Headset
 Works with most mobiles with a 2.5mm headset jack
 Clarity® Power™ for louder & clearer conversations
 Increases incoming sound up to 24db, 3 times normal
 Voice/Sound Activation to save battery power
 Includes 3 AC675 type standard hearing-aid batteries

2.4GHz & 5.8GHz Cordless Telephones



Headset Capable



VTECH V2656

2.4GHz Cordless with Digital Answering Machine

Designed & Engineered For:
General Business, SoHo and Residential Use.
Fully Digital Answering Machine Features
Up to 90 sec OGM and 15 mins Recording Time
3 Mailboxes & 2 Announcements
Time/Day Stamp and Voice Prompt Menu
Full Remote Access including TURN ON/OFF
Ring Delay (2, 4, 6 & Toll Saver)
Cordless Telephone Features
2.4GHz Digital Spread Spectrum Technology
95 Communication Channels
Operating Range: Up to 50m Indoors/300m Outdoors
SUPERLEX™ Handset Speakerphone
Multi-Handsets (up to 4 Handsets)
Intercom Calls and Call Transfers between Handsets
Conference Call (1 external and 2 internal)
Backlit LCD Display
Backlit Keypad
50 Name & Number Phonebook Directory
Call Waiting & Caller ID Ready (50 Number Log)
2.5mm Headset Port
Handset & Ringer Volume Control
5 Last Number Redial, Recall, Hold & Mute
Handset Size (mm): 171.5 (H) x 53 (W) x 45 (D)
Handset Weight: 134 grams
Includes Rechargeable 600mAh NICAD Battery Pack, Built-in Belt Clip on Handset and Wall Mounting Bracket.
Optional Accessories
V2600 Extra Handset & Charger
Plantronics Mobile Headset



Headset Capable



VTECH VT20-2431

2-Line 2.4GHz Cordless with Speakerphone

Designed & Engineered For:
General Business, SoHo and Residential Use.
Major Features
2.4GHz Digital Spread Spectrum Technology
94 Communication Channels
Operating Range: Up to 50m Indoors/300m Outdoors
Range Extender Mode
2-Lines (Handset & Base Line Keys)
Data Port for Second Line
SUPERLEX™ Speakerphones
Multi-Handsets (up to 8 Handsets)
Intercom Calls and Call Transfers between Handsets
Conference Call (1 or 2 external and 3-4 internal)
Backlit LCD Display on Handset and Base
Backlit Keypad
50 Name & Number Handset PhoneBook
50 Name & Number Base PhoneBook
Caller ID Ready (50 Number Log)
Callback Function for Local Calls
VMWI Ready (Visual Message Wait Indicator)
2.5mm Headset Port (Handset & Base)
Handset & Ringer Volume Control
5 Last Number Redial, Recall, Hold & Mute
Spare Battery Charging Compartment on Base Unit
Handset Size (mm): 174 (H) x 50 (W) x 34 (D)
Handset Weight: 116 grams
Includes Rechargeable 800mAh NICAD Battery Pack & Detachable Belt Clip.
Optional Accessories
VT20-2420 Extra Handset & Charger
Plantronics Mobile Headset



Headset Capable



VTECH usb7100

2.4GHz Cordless with USB Connector

Designed & Engineered For:
Use on either a PSTN Line or connection to a PC via the USB port for Internet Telephony
Cordless Telephone Features
2.4GHz Digital Spread Spectrum Technology
95 Communication Channels
Operating Range: Up to 50m Indoors/300m Outdoors
Multi-Handsets (up to 4 Handsets)
Dual Line Operation - switch between PSTN or VoIP
Intercom Calls and Call Transfers between Handsets
Conference Call (1 external and 2 internal)
Backlit LCD Display
160 Name & Number Phonebook Directory
Call ID Ready (50 Number Log)/Phonebook Matching
2.5mm Headset Port
Handset & Ringer Volume Controls & 10 Ring Tones
10 Last Number Redial, Recall, Hold & Mute
Handset Size (mm): 140 (H) x 53 (W) x 25 (D)
Handset Weight: 100 grams
Includes 2 AAA 750mAh Rechargeable NiMH Batteries, Belt Clip & USB Cables & Skype™ CD-ROM.
PC Requirements: Windows 2000 or XP, 400MHz Processor, 128mb RAM, CD-ROM Drive & USB Port.
Optional Accessory
Plantronics Mobile Headset



Headset Capable



VTECH mi6821

5.8GHz Cordless Telephone
Designed & Engineered For:
General Business, SoHo and Residential Use.
Major Features
Digital Spread Spectrum Technology
95 Communication Channels
Operating Range: Up to 50m Indoors/300m Outdoors
SUPERLEX™ Speakerphone
Multi-Handsets (up to 4 Handsets)
Intercom Calls and Call Transfers between Handsets
Conference Call (one external and 2 internal)
Backlit LCD Display on Handset
Backlit Keypad on Handset
50 Name & Number Handset Phonebook
Caller ID Ready (50 Number Log)
Callback function for Local Calls
VMWI Ready (Visual Message Waiting Indicator)
2.5mm Headset Port
Handset & Ringer Volume Control
10 Last Number Redial, Recall, Hold & Mute
Talktime: Up to 9 Hrs/Standby Time: Up to 96 Hrs
Handset Size (mm): 136 (H) x 47 (W) x 29.5 (D)
Handset Weight: 136 grams
Includes Rechargeable 600mAh NiMH Battery Pack, Detachable Belt Clip and Wall Mounting Bracket.
Optional Accessories
mi6820 Extra Handset & Charger
Plantronics Mobile Headset



Headset Capable



VTECH mi6861

5.8GHz Cordless with Digital Answering Machine
Designed & Engineered For:
General Business, SoHo and Residential Use.
Fully Digital Answering Machine Features
Up to 90 sec OGM and 15 mins Recording Time
3 Mailboxes & 2 Announcements
Time/Day Stamp and Voice Prompt Menu
Full Remote Access including TURN ON/OFF
Ring Delay (2, 4, 6 & Toll Saver)
Cordless Telephone Features
Digital Spread Spectrum Technology
95 Communication Channels
Operating Range: Up to 50m Indoors/300m Outdoors
SUPERLEX™ Speakerphones
Multi-Handsets (up to 4 Handsets)
Intercom Calls and Call Transfers between Handsets
Conference Call (one external and 2 internal)
Backlit LCD Display on Handset
Backlit Keypad on Handset
50 Name & Number Handset Phonebook
Caller ID Ready (50 Number Log)
Callback function for Local Calls
2.5mm Headset Port
Handset & Ringer Volume Control
10 Last Number Redial, Recall, Hold & Mute
Talktime: Up to 9 Hrs/Standby Time: Up to 96 Hrs
Handset Size (mm): 136 (H) x 47 (W) x 29.5 (D)
Handset Weight: 136 grams
Includes Rechargeable 600mAh NiMH Battery Pack, Detachable Belt Clip and Wall Mounting Bracket.
Optional Accessories
mi6820 Extra Handset & Charger
Plantronics Mobile Headset



Headset Capable



ip5825



ip5850

VTECH ip5825 & ip5850

5.8GHz Cordless with Extra Handset & Charger Pack
Designed & Engineered For:
General Business, SoHo and Residential Use.
ip5850 Fully Digital Answering Machine Features
Up to 90 sec OGM and 15 mins Recording Time
3 Mailboxes & 2 Announcements
Time/Day Stamp and Voice Prompt Menu
Full Remote Access including TURN ON/OFF
Ring Delay (2, 4, 6 & Toll Saver)
ip5825 & ip5850 Cordless Telephone Features
Digital Spread Spectrum Technology
95 Communication Channels
Operating Range: Up to 50m Indoors/300m Outdoors
SUPERLEX™ Handset Speakerphone
Multi-Handsets (2 Handsets, both included)
Intercom Calls and Call Transfers between Handsets
Conference Call (one external and 3 internal)
Backlit LCD Display on Handset & Base
Backlit Keypad
50 Name & Number Phonebook
Caller ID Ready (50 Number Log)
2.5mm Headset Port
Handset & Ringer Volume Controls
10 Last Number Redial, Recall, Hold & Mute
Adjustable Ringer Volume (6) and Tone (9)
Handset Size (mm): 155 (H) x 50 (W) x 30 (D)
Handset Weight: 150 grams
Includes Rechargeable AAA Batteries, Detachable Belt Clip and Wall Mounting Bracket.
Optional Accessory
Plantronics Mobile Headset

SoHo DECT Cordless Telephones

DECT

**ORICOM P70**

DECT Cordless Telephone
Designed & Engineered For:
Residential, SOHO and Retail.
DECT Cordless Features
DECT/GAP Digital Standard Cordless Technology
Operating Range: Up to 50m Indoors/300m Outdoors
Multi-Handsets (up to 4 handsets per base)
Conference Call (2 Handsets & 1 External Call)
Paging & Intercom Between Handsets
Backlit LCD Display - number dialed, call timer & icons
10 Name & Number PhoneBook
Caller ID Ready with "0" Insertion for One-Touch Dialback
10 Number Caller ID Log with PhoneBook Name Matching
1-Way Paging & Handset Locator
Selectable Recall (100 or 600ms Flash)
Last Number Redial, Mute & Key Lock
Handset Receiver Volume (High/Medium/Low)
Ring Volume Controls (4) & Ring Melody (5)
Talktime: Up to 8 Hrs/Standby Time: Up to 110 Hrs
Handset Size (mm): 130 (L) x 45 (W) x 29 (H)
Handset Weight: 104 grams (including Battery)
Includes 2 Rechargeable AA 600mAh NiMH Batteries

GAP

DECT

**DORO 620**

DECT Cordless Telephone
Designed & Engineered For:
Residential, SOHO and Retail.
DECT Cordless Features
DECT/GAP Digital Standard Cordless Technology
Operating Range: Up to 50m Indoors/300m Outdoors
Handset Speakerphone
Backlit LCD Display - number dialed, call timer & icons
20 (Handset) & 10 (Base) Name & Number PhoneBooks
Caller ID Ready with "0" Insertion for One-Touch Dialback
10 Number Caller ID Log
1-Way Paging & Handset Locator
Selectable Recall (100 or 600ms Flash)
10 Last Number Redial, Mute & Key Lock
Handset Receiver Volume
Ring Volume Controls & Ring Melody (6)
Talktime: Up to 10 Hrs/Standby Time: Up to 100 Hrs
Handset Size (mm): 145 (L) x 50 (W) x 28 (H)
Handset Weight: 135 grams (including Battery)
Wall Mountable (screws)
Includes 2 Rechargeable AAA 600mAh NiMH Batteries & Belt Clip

DECT



GAP

Headset
Capable**DORO 530+331**

DECT Cordless Telephone & Extra Pendant Telephone
Designed & Engineered For:
Residential, SOHO and Retail.
DECT Cordless Features
DECT/GAP Digital Standard Cordless Technology
Operating Range: Up to 50m Indoors/300m Outdoors
Multi-Handsets (up to 5 handsets per base)
Multi-Base Units (up to 4 base units per handset)
Intercom and Transfer Calls Between Handsets
Conference Call (2 Handsets & 1 External Call)
Handset Speakerphone
Backlit LCD Display - number dialed, call timer & icons
1 Direct Call & 10 Speed Dial Memories
Caller ID Ready with "0" Insertion for One-Touch Dialback
20 Number Caller ID Log
VMWI Ready (Visual Message Wait Indicator)
2.5mm Headset Port
1-Way Paging & Handset Locator
Selectable Recall (100 or 600ms Flash)
10 Last Number Redial, Mute & Key Lock
ID Phone by User Name
Handset Receiver Volume (5)
Ring Volume Controls (6) & Ring Melody (9)
Talktime: Up to 10 Hrs/Standby Time: Up to 100 Hrs
Handset Size (mm): 146 (L) x 51 (W) x 30 (H)
Handset Weight: 128 grams (including Battery)
Wall Mountable (screws)
Includes 331 Pendant, 2 Rechargeable AAA 600mAh NiMH Batteries & Belt Clip
Optional Accessories
541HS Extra Handset & Charging Unit
331 Portable Pendant
Plantronics Mobile Headset

DECT

Headset
Capable

GAP

DECT



GAP

SIEMENS GIGASET C340

DECT Digital Cordless Telephone
Designed & Engineered For:
Residential, SOHO and General Business Use
DECT Cordless Features
DECT/GAP Digital Standard Cordless Technology
Operating Range: Up to 50m Indoors/300m Outdoors
Multi-Handsets (up to 6 handsets per base)
Conference Call (1 external and 2 internal Dect users)
1-Way Paging & Intercommunication between handsets
Backlit 4-Line Graphic LCD Display - screen saver, number dialed, call duration & time
Handset Speakerphone with Volume Control (1-5)
100 Name & Number Phone Directory with Birthday Reminder, & VIP Entry with specific ring melody
160 Character SMS (Short Message Service) Ready
Caller ID Ready (30 Number Call Log, No "0" insertion)
Incoming Call Alert by LED Indicator
Transfer Calls Between Handsets & Call Barge-In
Selectable Auto Talk from Base Unit
Room Monitor Function
Adjustable Recall (80-600ms Flash) & Pause
10 Last Number Redial Memory & Mute
1-Way Paging & Handset Locator
Handset Receiver Volume Control (3 levels)
Handset & Base Ringer Volume (1-5) & Polyphonic Sounds
Talktime: Up to 15 Hrs/Standby Time: Up to 170 Hrs
Handset Size (mm): 158 (H) x 59 (W) x 32 (D)
Handset Weight: 124 grams (including battery)
Includes 2 Rechargeable AAA 700mAh NiMH Batteries
Optional Accessories
Gigaset C34 Extra Handset & Charger
Gigaset C34/CC Leatherette Carry Case
Gigaset Repeater

DECT



GAP

Headset
Capable**CLARITY C710**

Amplified DECT Digital Cordless Telephone
Designed & Engineered For:
People that are Hard of Hearing or have limited vision
DECT Cordless Features
DECT/GAP Digital Standard Cordless Technology
Operating Range: Up to 50m Indoors/300m Outdoors
Amplifies incoming calls up to 32 decibels
Adjustable Extra Loud 95 decibels Ringer
Clarity® Tone Control & Clarity® Power™
Visual Ringer on Handset & Base (Front & Back)
Large Backlit Keypad (flashes on incoming calls)
One-Touch Emergency Dial Button
Headset & Neck Loop or Inductive Coupler Connectors
Large Backlit LCD Display - number dialed, call duration & time
10 Speed Dial Memories
Caller ID Ready (10 Number Call Log, No "0" insertion)
Low Battery & Out of Range Warning Indicators
1-Way Paging & Handset Locator
Adjustable Recall (100-600ms Flash)
Last Number Redial & Mute
Auto Answer from Base & Keypad Lock
Handset Receiver Volume Control (0-15) with **Boost** (12-32)
Handset Ringer Volume (4) & Ring Tones (9)
Base Ringer Volume (4) & Ring Tones (9)
Talktime: Up to 9 Hrs/Standby Time: Up to 100 Hrs
Handset Size (mm): 180 (H) x 60 (W) x 27 (D)
Handset Weight: 250 grams (including battery)
Includes 3 Rechargeable AAA 700mAh NiMH Batteries and Detachable Belt Clip
Optional Accessory
Plantronics Mobile Headset

Deluxe SoHo DECT Cordless Telephones

DECT

Full
Colour
LCD



ORICOM M4000

Micro-DECT Cordless Telephone with Colour LCD
Designed & Engineered For: Residential, SOHO and Retail.
DECT Cordless Features
DECT/GAP Digital Standard Cordless Technology
Operating Range: Up to 50m Indoors/300m Outdoors
Multi-Handsets (up to 4 handsets per base)
Multi-Base Units (up to 4 base units per handset)
Intercom and Transfer Calls Between Handsets
Conference Call (2 Handsets & 1 External Call)
Handset Speakerphone
Walkie Talkie Mode (2 handsets up to 300m apart)
Backlit LCD Display - number dialled, call timer, icons, 3 Colour Wallpapers & Screen Saver Mode
120 Name & Number PhoneBook with a VIP Melody
9 One-Touch QuickDial Keys
Caller ID Ready with "0" Insertion for One-Touch Dialback
20 Number Caller ID Log with PhoneBook Name Matching
VMWI Ready (Visual Message Wait Indicator)
12 Hour/24 Hour Clock with Alarm Clock, Timer & StopWatch
Call Barring, Keypad Lock & Power On/Off
2.5mm Headset Port
1-Way Paging & Handset Locator
Selectable Recall (100 or 600ms Flash)
10 Last Number Redial, Mute & Key Lock
ID Phone by User Name & Auto Talk from Base Unit
Handset Receiver Volume Control
20 Polyphonic Ring Tones & Ringer Volume Control
Talktime: Up to 8 Hrs/Standby Time: Up to 20 Hrs
Handset Size (mm): 135 (L) x 45 (W) x 20 (D)
Handset Weight: 110 grams (including Battery)
Wall Mountable (screws)
Includes 2 Rechargeable AAA 750mAh NiMH Batteries & Detachable Belt Clip
Optional Accessories
M4050 Extra Handset & Charging Unit

GAP

New Zealand's First
Full Colour
LCD Cordless

DECT

Headset
Capable



DORO 850

Colour Micro-DECT Digital Cordless Telephone
Designed & Engineered For: Residential, SOHO and General Business Use
DECT Cordless Features
DECT/GAP Digital Standard Cordless Technology
Operating Range: Up to 50m Indoors/300m Outdoors
Multi-Handsets (up to 6 handsets per base)
Multi-Base Stations (up to 4 stations per handset)
Transfer Calls Between Handsets & Call Barge-In
Conference Call (1 external and 2 internal Dect users)
Large Backlit Colour LCD Display - contrast control, wall paper, number dialled, call duration timer & icons
Handset Speakerphone with Volume Control
100 Name & Number PhoneBook
160 Character SMS (Short Message Service) Ready
Caller ID Ready with "0" Insertion for One-Touch Dialback
30 Number Caller ID Log with PhoneBook Name Matching
Incoming Call Alert by LED Indicator, Power On/Off
Call Barring except for Emergency Numbers
2.5mm Headset Port
1-Way Paging & Intercommunication between handsets
Selectable Auto Talk from Base Unit
Alarm Clock Functions & Power Off
Selectable Recall (100 or 600ms Flash)
10 Last Number Redial, Mute & Key Lock
Handset Receiver Volume Control (3 levels)
Handset & Base Ringer Volume (1-5) & Melody (1-10)
including 8 Polyphonic Ring Tones
Silent Ring Mode & Programmable Base Unit PIN
Talktime: Up to 20 Hrs/Standby Time: Up to 300 Hrs
Handset Size (mm): 115 (H) x 45 (W) x 22 (D)
Handset Weight: 100 grams (including Battery)
Includes 3 Rechargeable AAA 600mAh NiMH Batteries & Detachable Belt Clip
Optional Accessories
850HS Extra Handset & Charger
rp2001x Repeater
331 Portable Pendant
Plantronics Mobile Headset

GAP

DECT

DORO rp2001x

DECT Repeater
Designed & Engineered For: Residential, SOHO and General Business Use to extend the operating range of a DORO 5065R or 850 DECT Cordless.

DECT Cordless Features
DECT/GAP Digital Standard Cordless Technology
Operating Range: Up to 50m Indoors/300m Outdoors
Extends the operating range of a handset up to 100%
Up to 5 Repeaters can be used with a single base station
Wall Mountable (Screws)
Repeater Dimensions: 131mm(L)x 111mm(W)x 50mm(D)
Repeater Weight: 136 grams
Includes AC/DC Power Adaptor with 3 metre cable
Note: If using more than one Repeater, they must be kept at least 10m apart. If a call is originated within the base unit range, you cannot continue the call outside of the base unit range (ie base unit will not hand-over the call to the repeater.) Calls originated within the Repeater range can be continued within the base unit range as the call will be handed-over from the Repeater to the Base unit.

DECT

GAP



SIEMENS GIGASET REPEATER

DECT Repeater
Designed & Engineered For: Residential, SOHO and General Business Use to extend the operating range of a Siemens DECT Cordless. Compatible with Gigaset 3010, 4010 Classic, 4010micro, C100, SL100 and SL100color.

DECT Cordless Features
DECT/GAP Digital Standard Cordless Technology
Operating Range: Up to 50m Indoors/300m Outdoors
Extends the reception range for 2 Handsets per repeater
Up to 6 Repeaters can be used with a single base station
4-digit Security Code, Range Indicator from Base Station
Handset Verification Tone, Wall Mountable (Screws)
Repeater Dimensions: 131mm(L)x 111mm(W)x 50mm(D)
Repeater Weight: 136 grams
Includes AC/DC Power Adaptor with 3 metre cable

DECT

Full
Colour
LCD



DORO 760X Pro

Splash, Dust & Shock Resistant DECT Cordless Telephone with Colour LCD Display
Designed & Engineered For: Residential, SOHO and Retail.
DECT Cordless Features
Splash, Dust & Shock Resistant
DECT/GAP Digital Standard Cordless Technology
Operating Range: Up to 50m Indoors/300m Outdoors
Multi-Handsets (up to 6 handsets per base)
Multi-Base Units (up to 4 base units per handset)
Intercom and Transfer Calls Between Handsets
Conference Call (2 Handsets & 1 External Call)
Handset Speakerphone with Volume Control (6)
Backlit Colour LCD Display - number dialled, call timer, icons, 5 Colour Wallpapers
Vibration Alert & Priority Call Alert
100 Name & Number PhoneBook
Caller ID Ready (50 Number Log)
SMS (Short Message Service) Ready & SIM Sync Function
Alarm Clock
Call Barring, Keypad Lock & Power On/Off
2.5mm Headset Port with Headset Volume Control (3)
1-Way Paging & Handset Locator
Selectable Recall (100 or 600ms Flash)
10 Last Number Redial, Mute & Key Lock
Baby Monitor Function
Handset Receiver Volume Control
6 Polyphonic Ring Tones & Ringer Volume Control (5)
Talktime: Up to 10 Hrs/Standby Time: Up to 120 Hrs
Handset Size (mm): 148 (L) x 49 (W) x 27 (D)
Handset Weight: 151 grams (including Battery)
Wall Mountable (screws)
Includes 3 Rechargeable AAA 600mAh NiMH Batteries & Detachable Belt Clip
Optional Accessory
Plantronics Mobile Headset

GAP

Headset
Capable

DECT

Full
Colour
LCD



GE 21858

Micro-DECT Cordless Telephone with Colour LCD
Designed & Engineered For: Residential, SOHO and Retail.
DECT Cordless Features
DECT/GAP Digital Standard Cordless Technology
Operating Range: Up to 50m Indoors/300m Outdoors
Multi-Handsets (up to 6 handsets per base)
Multi-Base Units (up to 4 base units per handset)
Intercom and Transfer Calls Between Handsets
Conference Call (2 Handsets & 1 External Call)
Handset Speakerphone
Walkie Talkie Mode (2 handset up to 300m apart)
4k Colour Graphic LCD Display - number dialled, call timer, 3 colour wallpapers, contrast control & screen saver mode
100 Name & Number PhoneBook
9 One-Touch QuickDial Keys & Priority Call Alert
Caller ID Ready (40 Number Log, No "0" insertion)
SMS (Short Message Service) Ready
Alarm Clock
Call Barring, Keypad Lock & Power On/Off
2.5mm Headset Port
1-Way Paging & Handset Locator
Selectable Recall (100 or 600ms Flash)
10 Last Number Redial, Mute & Key Lock
Games: "Snake" & "Guess Number"
Handset Receiver & Ringer Volume Control
10 Polyphonic Ring Tones & Ringer Volume Control (6)
Talktime: Up to 10 Hrs/Standby Time: Up to 100 Hrs
Handset Size (mm): 122 (L) x 46 (W) x 26 (D)
Handset Weight: 110 grams (including Battery)
Wall Mountable (screws)
Includes 2 Rechargeable AAA 600mAh NiMH Batteries & Detachable Belt Clip
Optional Accessory
Plantronics Mobile Headset

GAP

Headset
Capable

DECT

Full
Colour
LCD



GAP

Headset
Capable

SIEMENS GIGASET S440

DECT Digital Cordless Telephone with Colour LCD
Designed & Engineered For: Residential, SOHO and General Business Use

DECT Cordless Features
DECT/GAP Digital Standard Cordless Technology
Operating Range: Up to 50m Indoors/300m Outdoors
Multi-Handsets (up to 6 handsets per base)
Multi-Base Stations (up to 4 stations per handset)
Transfer Calls Between Handsets & Call Barge-In
Conference Call (1 external and 2 internal Dect users)
Full Duplex Handset Speakerphone with Volume Control
Walk & Talk Mode (2 handsets up to 300m apart)
5-Line 4K Colour Graphic LCD Display
Voice Dialling with 30 Entries
200 Name & Number PhoneBook & Email Directory, Birthday Reminder & VIP Entries with specific melody
5 Appointment Reminder & Alarm Clock Functions
9 Priority Speed Dial Memories
Copy Phone Directory to another Handset
640 Character SMS (Short Message Service) Ready
Caller ID Ready (30 Number Call Log, No "0" insertion)
Incoming Call Alert by LED Indicator
Illuminated Keypad & Navigation Key
Room Monitor Function
1-Way Paging & Intercommunication between handsets
Adjustable Recall (80-600ms Flash)
10 Last Number Redial Memory, Pause & Mute
Handset Receiver Volume Control (3 levels)
Handset & Base Ringer Volume (5) & Melody (10)
5 Polyphonic Ring Tones can be downloaded
Talktime: Up to 10 Hrs/Standby Time: Up to 150 Hrs
Includes 2 Rechargeable AAA 800mAh NiMH Batteries & Detachable Belt Clip
Handset Size (mm): 141 (H) x 51 (W) x 28 (D)
Handset Weight: 120 grams (including Battery)
Optional Accessories
Gigaset S44 Extra Handset & Charger
Gigaset S44/CC Leatherette Carry Case
Gigaset Repeater
Plantronics **MX103-SM2** or **M133-SM2** Mobile Headsets

SoHo DECT with Answering Machine & Long Range Cordless

DECT



DORO 133R

DECT Cordless Telephone with Digital TAM
Designed & Engineered For:
 Residential, SOHO and Retail Use.
Fully Digital Answering Machine Features
 Record & Announce Outgoing Messages (40 secs)
 Up to **15 minutes** Total Recording Capacity
 Day/Time Stamp & Personal Memo Recording
Full Remote Control including TURN-ON
 Announce Only Mode and Call Screening
 Selectable Ring Delay (2, 4, 6 & 8 rings & Toll Saver)
DECT Cordless Features
 DECT/GAP Digital Standard Cordless Technology
 Operating Range: Up to 50m Indoors/300m Outdoors
Handset Speakerphone
Backlit LCD Display - number dialled, call timer & icons
20 (Handset) & 10 (Base) Name & Number PhoneBooks
Caller ID Ready with "0" Insertion for One-Touch Dialback
 10 Number Caller ID Log with Phonebook Name Matching
 1-Way Paging & Handset Locator
 Adjustable Recall (100 & 600ms Flash)
 10 Last Number Redial, Mute & Key Lock
 Handset Receiver Volume (5)
 Ringer Volume (5) & Ring Melody (6)
Talktime: Up to 10 Hrs/Standby Time: 100 Hrs
 Handset Size (mm): 147 (L) x 52 (W) x 28 (H)
 Handset Weight: 123 grams (including Battery)
 Includes 2 Rechargeable AAA 650mAh NiMH Batteries & Fixed Belt Clip.

DECT

**Full
Colour
LCD**



DORO 680R

DECT Cordless Telephone with Colour LCD & Digital TAM
Designed & Engineered For:
 Residential, SOHO and Retail Use.
Fully Digital Answering Machine Features
 Up to **15 Minutes** Total Recording Capacity
 Day/Time Stamp & Personal Memo Recording
Call Indication Display
Full Remote Control including TURN-ON
 Announce Only Mode and Call Screening
 Selectable Ring Delay (2, 3, 4, 5, 6 & 7 rings & Toll Saver)
DECT Cordless Features
 DECT/GAP Digital Standard Cordless Technology
 Operating Range: Up to 50m Indoors/300m Outdoors
Multi-Handsets (up to 5 handsets per base)
Multi-Base Units (up to 4 base units per handset)
 Intercom and Transfer Calls Between Handsets
 Conference Call (2 Handsets & 1 External Call)
Handset Speakerphone with Volume Control (5)
65k Colour Graphic LCD Display - number dialled, call timer
 10 colour wallpapers, contrast control & screen saver mode
200 Name & Number PhoneBook
10 Name & Number Shared PhoneBook in Base
Backlit Keypad
Caller ID Ready (30 Number Caller ID Log)
 SMS (Short Message Service) Ready
Alarm Clock
 Call Barring, Keypad Lock & Power On/Off
2.5mm Headset Port
 1-Way Paging & Handset Locator
 Selectable Recall (100 or 600ms Flash)
 30 Last Number Redial & Mute
Built-in Games
 Handset Receiver Volume Control (5)
15 Polyphonic Ring Tones & Ring Volume Control (5)
Talktime: Up to 12 Hrs/Standby Time: Up to 120 Hrs
 Handset Size (mm): 145 (L) x 50 (W) x 27 (H)
 Handset Weight: 135 grams (including Battery)
 Wall Mountable (Bracket included)
 Includes 2 Rechargeable AAA 600mAh NiMH Batteries & Detachable Belt Clip
Optional Accessory
 Plantronics Mobile Headset

DECT



ORICOM M2400

DECT Cordless Telephone with Digital TAM
Designed & Engineered For:
 Residential, SOHO and Retail Use.
Fully Digital Answering Machine Features
 Record & Announce Outgoing Messages (40 secs)
 9 Mins/25 Calls Recording Capacity (1-2 mins per call)
 Day/Time Stamp & **New Message Alert**
 Personal Memo Recording (2 mins max)
Full Remote Control including TURN-ON
 Announce Only Mode and Call Screening
 Selectable Ring Delay (2-7 rings & Toll Saver)
DECT Cordless Features
 DECT/GAP Digital Standard Cordless Technology
 Operating Range: Up to 50m Indoors/300m Outdoors
Multi-Handsets (up to 5 handsets per base)
 Conference Calls (1 External/2 Handsets)
 Intercom and Transfer Calls Between Handsets
Handset Speakerphone
Backlit LCD Display - number dialled, call time & icons
30 Name & Number Phone Book
Caller ID Ready with "0" Insertion for One-Touch Dialback
 20 Number Caller ID Log with Phonebook Name Matching
 VMWI Ready (Visual Message Wait Indicator)
Small Flashlight (Torch) in Handset
 Backlit Keypad and Keypad Lock
 1-Way Paging & Handset Locator
 Adjustable Recall (100 & 600ms Flash)
 Last Number Redial (last 5 numbers)
 Handset & Speaker Volume Controls
 Selectable Ringer Volume (5) & Melody (9)
Talktime: Up to 12 Hrs/Standby Time: 144 Hrs
 Handset Size (mm): 135 (L) x 47 (W) x 26 (H)
 Handset Weight: 116 grams (including Battery)
 Includes 2 Rechargeable AAA 650mAh NiMH Batteries & Detachable Belt Clip.
Optional Accessory
 M2450 Extra Handset & Charging Unit

DECT



ORICOM P700+1

DECT Cordless Telephone with Digital TAM
& Extra Handset & Charger
Designed & Engineered For:
 Residential, SOHO and Retail Use.
Fully Digital Answering Machine Features
 Record & Announce Outgoing Messages (40 secs)
7-Segment LCD Display
 Up to **19 Minutes** Total Recording Capacity
 Day/Time Stamp & Personal Memo Recording
Full Remote Control including TURN-ON
 Announce Only Mode and Call Screening
 Selectable Ring Delay (2, 3, 4, 5, 6 & 7 rings & Toll Saver)
DECT Cordless Features
 DECT/GAP Digital Standard Cordless Technology
 Operating Range: Up to 50m Indoors/300m Outdoors
Multi-Handsets (up to 4 handsets per base)
 Conference Calls (1 External/2 Handsets)
 Intercom and Transfer Calls Between Handsets
Handset Speakerphone
Backlit LCD Display - number dialled, call time & icons
10 Name & Number Phone Book
Caller ID Ready with "0" Insertion for One-Touch Dialback
 10 Number Caller ID Log with Phonebook Name Matching
 1-Way Paging & Handset Locator
 Keypad Lock, Mute & Auto Answer from Base
 Adjustable Recall (100 & 600ms Flash)
 3 Last Number Redial
 Handset Receiver Volume Control (3)
 Selectable Ringer Volume (3) & Melody (5)
Talktime: Up to 8 Hrs/Standby Time: 110 Hrs
 Handset Size (mm): 130 (L) x 45 (W) x 25 (H)
 Handset Weight: 104 grams (including Battery)
 Includes Extra Handset & Charger, 2 Rechargeable AAA 650mAh NiMH Batteries & Detachable Belt Clip.

GAP

DECT



GAP

**Headset
Capable**

DORO 331

Compact DECT Cordless Extra Handset & Charger
Designed & Engineered For:
 For use as a Compact Extra Handset with DORO DECT Cordless. Compatible with DORO 530, 680R, 760X & 850.
DECT Cordless Features
 DECT/GAP Digital Standard Cordless Technology
 Operating Range: Up to 50m Indoors/300m Outdoors
 LCD Display - number dialled, call timer & icons
Hands-Free Conversation via Speakerphone/Headset
3 Direct Call Keys
 Caller ID Ready (Base Unit must be Caller ID Ready)
2.5mm Headset Port
 Recall, Last Number Redial, Key Lock, **Power On/Off**
 Speakerphone & Headset Volume Control
 Ringer Volume (4) & Melody (9)
TalkTime: 2 Hours/Standby Time: 72 Hours
Remote Pack Size(mm): 72 (L) x 60 (W) x 20 (D)
 Remote Pack Weight: 60 grams (including Battery)
 Includes 2 Rechargeable AAA 650mAh NiMH Batteries, Headset, & Detachable Neck Strap
Optional Accessory
 Plantronics Mobile Headset

**800-900MHz
Split
Spread Spectrum**



**Headset
Capable**

GIGASONIC CT901

800-900MHz Long Range Cordless Telephone
Designed & Engineered For:
 Farms, Orchards, Vineyards, Factories, Shopping Malls, Warehouses, Car Yards, Schools, Sports Stadiums, etc.
Major Features
 800/900MHz Split Spectrum Digital Cordless Technology
 Auto Transmitting Power Level Control
Operating Range: Up to 5km
 Base & Handset Power Output: 500mw & 300mw
 Built-in Voice Scrambling Security System
Multi-Handsets (up to 90 Handsets)
Multi-Base Stations (Up to 9 Base Stations)
Walkie-Talkie Mode (Handset to Handset Calls)
 Intercom Calls and Call Transfers between Handsets
 Conference Call (two handsets and one external caller)
LCD Display & Backlit Keypad
40 Name & Number Phonebook Directory
Caller ID Ready with "0" Insertion for 1-touch Dialback
2.5mm Headset Port & Vibration Alert
 Handset & Ringer Volume Control
 Call Restriction and Toll Barring
 Handset Size (mm): 130 (L) x 45 (W) x 26 (D)
 Handset Weight: 162 grams (including Battery)
 Includes High Gain Handset Antenna, **2 Rechargeable Lithium-Ion Battery Packs & Leatherette Carry Case.**
GIGASONIC ACCESSORIES

CT901HS Extra Handset & Charger - Up to 90 handsets can work from one Base Station.
CT910BS Extra Base Station - Up to 9 Base Stations.

CT910CC Leatherette Carry Case - to protect the Handset
CT901HF Hands-Free Kit - for carrying the CT901 Handset.
PLANTRONICS M220 Mobile Headset.

DP909DP Door Phone - with Keypad Cover.
DP909SU Subscriber Unit - for use with the Door Phone.
DP909DL Door Lock - for use with the Door Phone.

Compact, Residential & Network Service Telephones



DORO 509C

Compact Telephone
 Designed & Engineered For:
 Residential
Major Features
Adjustable Recall (100 or 600ms Flash)
 Last Number Redial & Mute Buttons
Adjustable Receiver Volume
 Adjustable Ringer Volume (HI/LO)
 Wall Mountable (Screws)



ORICOM TP9

Compact Telephone with Caller ID
 Designed & Engineered For:
 Residential
Major Features
LCD Display with Contrast Control
3 One-Touch and 10 Speed-Dial Memories
Caller ID with "0" Insertion for One-Touch Dialback
60 Number Call Log with Save to Memory Function
New Call Indicator
 Recall & Last Number Redial
Mute Button
Adjustable Receiver Volume (2)
Selectable Ringer Volume (3)
Memory Pad
 Wall Mountable (Screws)
 Includes 3 AA Batteries



DORO 513C

Budget Desktop Telephone
 Designed & Engineered For:
 Residential, Retail & Business
Major Features
4 One-Touch & 10 Speed Dial Memories
 Adjustable Recall (100/600ms Flash)
Mute with LED Indicator
 Last Number Redial
 Adjustable Receiver Volume Control
 Adjustable Ringer (HI/LO)
 Wall Mountable (Bracket Included)



AUDIOLINE SENSOR 500

Monitor Telephone with LCD Display and Pre-Programmable Network Services
 Designed & Engineered For:
 Residential and SoHo Business Applications requiring selected Network Services such as Caller ID, Call Minder, Call Waiting, CENTREX, GATEWAY, etc.
Major Features
 On-Hook Dialling (Monitor) with Volume Control
LCD Display shows Date & Time, Number Dialed
10 One-Touch Name & Number Memories
20 Name & Number Phonebook
 Alternative Ringer Pitch for up to 5 phone numbers
Headset Port (for Optional Headset)
 Recall, Last Number Redial, Pause & Mute
 Adjustable Ringer & Handset/Headset Volume Control
Caller ID Ready (60 Number Caller Log with Name/Number Matching to the Phonebook with either auto "0" for Telecom or auto "1 0" insertion for Centrex or Gateway calls for One-Touch Callback)
Telecom and TelstraClear Network Services can be Programmed into the 10 One-Touch Memories
Call Minder Message Alert & One-Touch Access
 Includes Wall Mounting Bracket & Power Adaptor



AUDIOLINE PRISMA

Trimline Desk/Wall Telephone
 Designed & Engineered For:
 Residential
Major Features
10 Speed-Dial Memories
 Recall & Last Number Redial
Mute Button with LED Indicator
Receiver Volume Control
Selectable Ring Volume (3) & Melody (3)
 Speed Dial Memory Pad
 Wall Mountable (Screws)



GE 29257

Compact Telephone
 Designed & Engineered For:
 Residential, Retail & Hotel/Motel Use
Major Features
3 One-Touch and 9 Speed-Dial Memories
Backlit Keypad
Adjustable Recall (100 or 600ms Flash)
 Last Number Redial & Pause
Adjustable Receiver Volume
Speed Dial Memory Pad
 Wall Mountable (Screws)
Colours: Black, White & Translucent Blue



DORO X30

Designer Desktop Telephone with LCD Display
 Designed & Engineered For:
 Residential, SOHO, Retail & Executives
Major Features
 European Styling
LCD Display - number dialled, call duration & clock (time & date)
3 One-Touch & 10 Speed Dial Memories
 Recall (Flash), Last Number Redial & Pause
Mute Button On Handset
 Adjustable Handset Volume Control
Selectable Ring Melodies (3) & Volumes (3)
 Memory Battery Back-up (Batteries not included)



AUDIOLINE CRT10 Symphony

Integrated Telephone, Alarm Clock & Radio
 Designed & Engineered For:
 Residential & Hotel/Motel Use
Major Features
Full Size Handset with Keypad
 Dial-tone Reset in Handset
 Recall (Flash), Last Number Redial & Pause
Mute Button on Handset with LED Indicator
 Adjustable Handset & Ringer Volumes
Digital 12-Hour LED Alarm Clock
LCD Display - Dimmer (Hi/Lo)
AM/FM Radio with Snooze Button
 Sleep Countdown Timer (59 minutes)
Radio Mutes On Handset Pick-up
Includes Power Adaptor
Also, see DORO CRT10MW Black & White (Page 22)



DORO AFTI 20

Trimline Desk/Wall Telephone
 Designed & Engineered For:
 Residential, Retail & Hotel/Motel Use
Major Features
10 Speed-Dial Memories
 Recall & Last Number Redial
Mute Button with LED Indicator
Receiver Volume Control
Selectable Ring Volume (4) & Melody (3)
 Speed Dial Memory Pad
 Wall Mountable (Screws)
Colours: Black, Blue & White



TELEDEX Trimline II

2-Line Desk/Wall Telephone
 Designed & Engineered For:
 Residential, Retail & Hotel/Motel Use
Major Features
2 Lines
MultiX™ Message Waiting Circuitry
Backlit Keypad
 Recall (Flash) & Last Number Redial
Hold Button on Base
 Adjustable Handset Volume Control
 Wall Mountable (Screws)



AUDIOLINE PHONE EASY

Big Button Desktop Telephone
 Designed & Engineered For:
 Use by teenagers and functionality is suited for people with poor vision, hearing loss, arthritis or dexterity problems.
Major Features
Big Button Keypad
3 One-Touch Memories
 10 Speed-Dial Memories
 Recall (Flash) & Last Number Redial
Mute Button with LED Indicator
 Adjustable Receiver Volume Control
 Adjustable Ringer Volume (Hi/Mid/Low/Off)
3 Ring Melodies & Visual Ring Indicator
Hearing Aid Compatible
Speed Dial Memory Pad
 Wall Mountable (screws)



ORICOM TCR10

Integrated Telephone, Alarm Clock & Radio with Message Wait
 Designed & Engineered For:
 Residential & Hotel/Motel Use
Major Features
Full Size Handset with Backlit Keypad & Reset Message Wait Lamp (80-100v or Line Reversal)
 Visual Ring Indicator
10 Speed Dial Memories
 Selectable Recall (100 or 600ms Flash)
 Last Number Redial & Pause
Mute Button on Handset with LED Indicator
 Adjustable Handset & Ringer Volumes
Digital 12-Hour LED Alarm Clock with Snooze
High Contrast LCD Display - Dimmer (Hi/Lo)
Digital AM/FM Radio with Auto Mute
 Clock Display Battery Backup (batteries required)
 Includes Power Adaptor & 2 AAA Batteries
Colours: Black & White

Business Desktop & Monitor Telephones



DORO 513C
 Desktop Telephone
 Designed & Engineered For:
 Retail & Business
 Major Features
4 One-Touch & 10 Speed Dial Memories
Adjustable Recall (100/600ms Flash)
 Mute with LED Indicator
 Last Number Redial
 Adjustable Receiver Volume Control
 Adjustable Ringer (HI/LO)
 Wall Mountable (Bracket included)



ALCATEL 2410
 Standard Desktop Telephone
 Designed & Engineered For:
 Most Business Applications
 Major Features
Data Port
Incoming Call Indicator/Message Waiting Lamp
 Last Number Redial, Pause & Mute
Adjustable Recall (100 or 600ms Flash)
 Adjustable Ring Volume
2 Line Cords (BT-to-RJ11 and RJ45-to-RJ11 Plugs)
 Wall Mountable (Screws)
 Colours: **Beige & Graphite Grey**



DORO Afti 22
 Business Desktop Telephone
 Designed & Engineered For:
 Retail & Business
 Major Features
4 One-Touch and 10 Speed Dial Memories
Incoming Call Indicator/Message Waiting Lamp
 Adjustable Recall (100 & 600ms Flash)
 Last Number Redial, Pause & Mute
 Handset Receiver Volume Control
 Adjustable Ringer Volume, Type & Melody
 Hearing Aid Compatible
 Wall Mountable (Screws)
 Colours: **Black, White & Silver**



ALCATEL 2412
 Business Desktop Telephone
 Designed & Engineered For:
 Most Business Applications
 Major Features
10 One-Touch Memories
Data Port
Incoming Call Indicator/Message Waiting Lamp
 Last Number Redial, Pause & Mute
Adjustable Recall (100 or 600ms Flash)
 Adjustable Ring Volume
2 Line Cords (BT to RJ11 and RJ45 to RJ11 Plugs)
 Wall Mountable (Screws)
 Colours: **Beige & Graphite Grey**



POLARIS NRX1
 Business Desktop Telephone
 Designed & Engineered For:
 Retail & Business
 Major Features
Data Port
Incoming Call Indicator/Message Waiting Lamp
 Recall (600ms Flash) & Last Number Redial
 Mute with LED Indicator
 Adjustable Ringer Volume
 Wall Mountable (In-built Bracket)



POLARIS NRX2H
 Headset Telephone
 Designed & Engineered For:
 Light to Heavy Use by Telemarketers, Call Centres,
 Sales Staff, Service Departments, SOHO
 Major Features
On-Hook Dialling
10 One-Touch & 10 Speed Dial EEPROM Memories
 Visual "In Use" & Incoming Call Indicators
Message Wait Lamp
Headset Port
Data Port
 Handset or Headset Switchable
 Headset Volume Control & Handset Mute Button
Latching Headset Mute Button with Indicator
 Recall, Last Number Redial & Pause Buttons
 Ringer Pitch and Volume Controls
 Wall Mountable (In-built Bracket)



DORO Afti 40
 Pre-Programmable Monitor Desktop Telephone
 Designed & Engineered For:
 Hotel/Motel Guest Rooms, CENTREX, Gateway,
 and Most Business Applications
 Major Telephone Features
On-Hook Dialling & Group Listening
10 One-Touch EEPROM Memories
2-Line Data Port Capabilities for Simultaneous
Use of Telephone and Data Transfer
Ring Indicator/Message Wait Lamp
Selectable Message Wait (80-100v, 12vLR, 48vLR)
Adjustable Recall (100, 300 or 600ms Flash)
Latching Mute & Last Number Redial
 Adjustable Handset and Speaker Volume Controls
 Adjustable Ringer Volume (HI/Lo/OFF)
 Wall Mountable (Screws)
Customizable Dial Card (50 min qty required)
1 Line Cord (RJ45 to RJ11)
 Colours: **Black & White**



DORO Congress 100
 Designer Desktop Telephone
 Designed & Engineered For:
 Most Residential & Business Applications
 Major Features
10 Speed Dial Memories
Data Port
Incoming Call Indicator/Message Waiting Lamp
Selectable Message Wait (80-100v, 12vLR, 48vLR)
Adjustable Recall (100, 270 or 600ms Flash)
 Last Number Redial & Pause
Mute & Hold Buttons with LED Indicators
Headset Port & Headset Button with LED indicator
Handset/Headset Volume Control (5)
Selectable Ring Melodies (3)
Adjustable Ringer Levels (HI/MED/LO/OFF)
2 Line Cords (BT-to-RJ11 & RJ45-to-RJ11 Plugs)
 Wall Mountable (Optional DWB100GR Bracket)



DORO Congress 200
 Designer Monitor Desktop Telephone with LCD Display
 Designed & Engineered For:
 Residential, SOHO, Retail & Executives
 Major Features
LCD Display - Number Dialed, Call Duration & Clock
On-Hook Dialling (Monitor) with Group Listening
20 One-Touch Memories
Data Port
Incoming Call Indicator/Message Waiting Lamp
Selectable Message Wait (80-100v, 12vLR, 48vLR)
Adjustable Recall (100, 300 or 600ms Flash)
 Last Number Redial & Adjustable Pause (2)
Mute & Hold Buttons with LED Indicator
Headset Port & Headset Button with LED Indicator
Adjustable Receiver Volume Control (5)
Selectable Ring Melodies (3)
Adjustable Ringer Levels (HI/MED/LO/OFF)
Customized Labels can be placed under faceplate
2 Line Cords (BT-to-RJ11 & RJ45-to-RJ11 plugs)

Hospitality Telephones & Telephone System Add-ons

TELEDEX DIAMOND Series

Hospitality Telephones

Designed & Engineered For:
Hotels, Motels and Hospitals.

Major Features

MultiX™ Message Waiting Circuitry
Data Port
Programmable Guest Service Keys
ADA Handset Volume Boost (5 levels)
3 Way Conference Call Key (Diamond L2S only)
Customizable DialCard (50 min qty required)

Models Available

Diamond (No Guest Service Keys)
Diamond +3 (3 Guest Service Keys)
Diamond +5 (5 Guest Service Keys)
Diamond +10 (10 Guest Service Keys)
Diamond S (Speakerphone with 10 Guest Service Keys)
Diamond L2S (2-Line Speakerphone, 11 Guest Service Keys)



Diamond



Diamond +3



Diamond +5



Diamond +10



Diamond S



Diamond L2S

TELEDEX OPAL SERIES

Hospitality Telephones

Designed & Engineered For:
Hotels, Motels and Hospitals.

Major Features

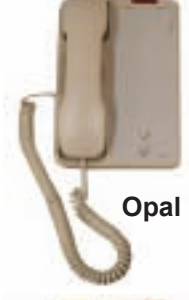
MultiX™ Message Waiting Circuitry
Easy Access™ Data Port
Programmable Guest Service Keys
MPC™ Technology
PrimeLine™ Ring Auto Line Select
ADA Handset Volume Boost (5 levels)
3 Way Conference Call Key (Opal 2011S only)
Customizable DialCard (50 min qty required)

Models Available

Opal 1000 (No Guest Service Keys)
Opal 1002 (No Guest Service Keys, Redial & Recall)
Opal 1003 (3 Guest Service Keys)
Opal 1005 (5 Guest Service Keys)
Opal 1010 (10 Guest Service Keys)
Opal 1010S (Speakerphone with 10 Guest Service Keys)
Opal 2011S (2-Line Speakerphone, 11 Guest Service Keys)



Opal 1000



Opal 1001



Opal 1002



Opal 1003



Opal 1005



Opal 1010



Opal 1010S



Opal 2010S

TELEDEX Trimline II

2-Line Compact Telephone

Designed & Engineered For:
Residential, Retail & Hotel/Motel Use

Major Features

2 Lines
MultiX™ Message Waiting Circuitry
Backlit Keypad
Recall (Flash) & Last Number Redial
Hold Button on Base
Adjustable Handset Volume Control
Wall Mountable (Screws)



DORO Afti 40

Pre-Programmable Monitor Desktop Telephone

Designed & Engineered For:
Hotel/Motel Guest Rooms, CENTREX, Gateway,
and Most Business Applications

Major Telephone Features

On-Hook Dialling & Group Listening
10 One-Touch EEPROM Memories
2-Line Data Port Capabilities for Simultaneous Use of Telephone and Data Transfer
Ring Indicator/Message Wait Lamp
Selectable Message Wait (80-100v, 12vLR, 48vLR)
Adjustable Recall (100, 300 or 600ms Flash)
Latching Mute & Last Number Redial
Adjustable Handset and Speaker Volume Controls
Adjustable Ringer Volume (Hi/Lo/OFF)
Wall Mountable (Screws)
Customizable Dial Card (50 min qty required)
1 Line Cord (RJ45 to RJ11)
Colours: Black & White

DORO CRT10MW

Integrated Telephone, Alarm Clock & Radio with
Message Wait Lamp

Designed & Engineered For:
Residential & Hotel/Motel Use

Major Features

Full Size Handset with Keypad
Dial-tone Reset in Handset
Recall (Flash), Last Number Redial & Pause
Mute Button on Handset with LED Indicator
Adjustable Handset & Ringer Volume
Digital 12-Hour LED Alarm Clock
LCD Display Dimmer (Hi/Lo)
AM/FM Radio with Snooze Button
Sleep Countdown Timer (59 minutes)
Radio Mutes On Handset Pick-up
Colours: Black & White



ORICOM TCR10

Integrated Telephone, Alarm Clock & Radio with Message Wait

Designed & Engineered For:
Residential & Hotel/Motel Use

Major Features

Full Size Handset with Backlit Keypad & Reset Button
Message Wait Lamp (80-100v or Line Reversal)
10 Speed Dial Memories
Selectable Recall (100 or 600ms Flash)
Last Number Redial & Pause
Mute Button on Handset with LED Indicator
Adjustable Handset & Ringer Volumes
Digital 12-Hour LED Alarm Clock with Snooze
High Contrast LCD Display - Dimmer (Hi/Lo)
Digital AM/FM Radio with Auto Mute
Clock Display Battery Backup (batteries required)
Includes Power Adaptor & 2 AAA Batteries
Colours: Black & White

ALCATEL 2410NK & 2410AD

Desktop Telephone without a Keypad &
Desktop Telephone with Auto Dialling

Designed & Engineered For:

Specialty Applications such as Airport Reservations,
Taxi Call, Emergency Dialling, etc.

2410NK Major Features

Connects Behind a PBX or KTS System
No Keypad - External Calls cannot be made
Adjustable Ringer Volume
Wall Mountable (Screws)

Colours: Beige & Graphite

2410AD Major Features

Connects to a CO Line
No Keypad - External Calls cannot be made
Auto Dialling Feature which allows you to program the phone to dial a specified number when the handset is lifted.
Adjustable Ringer Volume
Wall Mountable (Screws)
Colours: Beige & Graphite Grey



BELCOM MOH-CD

Music-Message On-Hold CD Player

Designed & Engineered For:

Small Business MOH Player to connect to Telephone
Systems

Major Features

Continuous Play
Auto Re-Start on Power Failure
Anti-scratch Function (auto restart)
Limited Access Volume Control
Wall Mountable



Specialty Telephones & Devices

DECT



Headset Capable

CLARITY C710

Amplified DECT Digital Cordless Telephone
Designed & Engineered For:
 People that are Hard of Hearing or have limited vision
DECT Cordless Features
 DECT/GAP Digital Standard Cordless Technology
 Operating Range: Up to 50m Indoors/300m Outdoors
Amplifies incoming calls up to 32 decibels
Adjustable Extra Loud 95 decibels Ringer
Clarity® Tone Control & Clarity® Power™
Visual Ringer on Handset & Base (Front & Back)
Large Backlit Keypad (flashes on incoming calls)
One-Touch Emergency Dial Button
Headset & Neck Loop or Inductive Coupler Connectors
Large Backlit LCD Display - number dialled, call duration & time
 10 Speed Dial Memories
 Caller ID Ready (10 Number Call Log, No "0" insertion)
 Low Battery & Out of Range Warning Indicators
 1-Way Paging & Handset Locator
 Adjustable Recall (100-600ms Flash)
 Last Number Redial & Mute
 Auto Answer from Base & Keypad Lock
 Handset Receiver Volume Control (0-15) with **Boost** (12-32)
 Handset Ringer Volume (4) & Ring Tones (9)
Base Ringer Volume (4) & Ring Tones (9)
 Talktime: Up to 9 Hrs/Standby Time: Up to 100 Hrs
 Handset Size (mm): 180 (H) x 60 (W) x 27 (D)
 Handset Weight: 250 grams (including battery)
 Includes 3 Rechargeable AAA 700mAh NiMH Batteries and Detachable Belt Clip
Optional Accessory
 Plantronics Mobile Headset



DORO 312C

Big Button Desktop Speakerphone
Designed & Engineered For:
 Use by teenagers and functionality is suited for people with poor vision, hearing loss, arthritis or dexterity problems.
Major Features
 Speakerphone
Large Character Backlit LCD Display shows number dialled, Date & Time, Call Timer & Caller ID Info
Big Button Keypad
2 One-Touch & 10 Speed Dial Memories
32 Name/Number PhoneBook
Caller ID Ready (Up to 32 Number Log)
 Number Matching to PhoneBook Names
 Recall (Flash) & Last Number Redial
 Mute Button with LED Indicator
 Adjustable Receiver Volume Control
 Adjustable Loud Ringer Volume & Melody
Caller ID Message & Visual Ring Indicator
Hearing Aid Compatible
Memory Battery Back-up (4 AA Batteries required)
 Wall Mountable (bracket included)
 Includes Power Adaptor



PLANTRONICS MHA100

Mobile Headset Amplifier
Designed & Engineered For:
 For use with Plantronics Mobile Headset to amplify the audio in noisy environments or for hard-of-hearing people.
Major Features
 Works with any M series Mobile Headset
 Works with most mobiles with a 2.5mm headset jack
 Clarity® Power™ for louder & clearer conversations
 Increases incoming sound up to 24db, 3 times normal
 Voice/Sound Activation to save battery power
 Includes 3 AC675 type standard hearing-aid batteries



CLARITY JV-35™

The Talking Phone™
Designed & Engineered For:
 People with poor vision, hearing loss, arthritis or dexterity problems.
Major Features
Talking Keypad announces each number when dialled
High Contrast Jumbo Keys with Braille Characters
3 One-Touch Emergency Icon Buttons
Powerful Amplifier raises volume 30-70 times normal
Signal Processor minimises background noise
Adjustable Volume Tone Selector
10 Speed-Dial Memories with Pre-Recorded Announcements of the person you are calling
 Recall (Flash) & Last Number Redial
 Electronic Hold with Auto Release
Extra Bright Visual Ring Indicator
3.5mm Audio Port for Assistive Listening Devices
 Adjustable Receiver Volume Control
Adjustable Extra Loud Ringer Volume (85 decibel)
Hearing Aid T-coil Compatible
 Battery Back-up (batteries required)
 Wall Mountable (screws)
 Includes Power Adaptor



ORICOM TP150

Amplified Big Button Speakerphone with Talking Caller ID & SOS Pendant
Designed & Engineered For:
 People with poor vision, hearing loss, arthritis or dexterity problems.
Major Features
SOS Pendant operates up to 30m from telephone
 Speakerphone with Volume Control
Large Character Backlit Tilting LCD Display shows Number Dialled, Date & Time, Call Timer & Caller ID Info
Large High Contrast Tactile Keypad
2 One-Touch & SOS Memories
30 Name & Number PhoneBook
Talking Caller ID Ready with "0" insertion for One-Touch Dialback
Amplified Handset Receiver Volume up to 20 decibels
Large Visual Ring Indicator
Extra Loud Ringer Volume up to 90 decibels
 Adjustable Recall (100 or 600ms Flash)
 Last Number Redial & Mute Button with LED Indicator
Memory Battery Back-up (4 AA Batteries supplied)
 Wall Mountable (Bracket included)
 Includes Power Adaptor



DORO TELEFLASH1

Incoming Call Alert
Designed & Engineered For:
 Hearing Impaired People, Workshops, Garages, Farms, & Manufacturing Facilities
Major Features
 Fits any Telepermitted Telephone
Light, Sound or Both Alert
 5 Metre Cable
 Wall Mountable (screws)
 Includes Power Adaptor



CLARITY XL-50

Powerful Amplified Telephone
Designed & Engineered For:
 People with poor vision, hearing loss, arthritis or dexterity problems.
Major Features
High Contrast Backlit Jumbo Keys
Powerful Amplifier raises volume 100 times normal
Amplifier automatically resets to normal on hang-up
One-Touch Button to return volume to previous setting
Signal Processor minimises background noise
Anti-Feedback Filter eliminates feedback and distortion
Adjustable Volume Tone Selector
 12 One-Touch Memories
 Hold, Recall (Flash) & Last Number Redial
Unanswered Call/Voice Mail Indicator
Super Bright Visual Ring Indicator
3.5mm Audio Port for Assistive Listening Devices
 Adjustable Receiver Volume Control
Adjustable Super Loud Ringer Volume (100 decibel)
 2 Selectable Ringer Tones
Hearing Aid T-coil Compatible
Speed Dial Memory Pad
 Battery Back-up (batteries required)
 Wall Mountable (screws)
 Includes Power Adaptor



AUDIOLINE PHONE EASY

Big Button Desktop Telephone
Designed & Engineered For:
 Use by teenagers and functionality is suited for people with poor vision, hearing loss, arthritis or dexterity problems.
Major Features
Big Button Keypad
3 One-Touch Memories
 10 Speed-Dial Memories
 Recall (Flash) & Last Number Redial
Mute Button with LED Indicator
 Adjustable Receiver Volume Control
 Adjustable Ringer Volume (Hi/Mid/Low/Off)
3 Ring Melodies & Visual Ring Indicator
Hearing Aid Compatible
Speed Dial Memory Pad
 Wall Mountable (screws)



CLARITY CE125

Incoming Call Amplifier
Designed & Engineered For:
 People with hearing loss or working in noisy environments (ie manufacturing, panelbeaters)
Major Features
 Compatible with most telephones
Amplifies High Frequencies
Slide switch provides 15db of volume control
Boost Button for up to 28db of gain
Portable Use (2 AAA Batteries required)



CLARITY PL100

Personal Listener Plus
Designed & Engineered For:
 People with hearing loss or working in business meetings and conference calls
Major Features
 Comfortable Headset to fit either Left or Right Ear
 Detachable Omni-Directional Microphone
 Advanced Noise Filtering Technology
Amplifies incoming sound up to 40db
 Includes Desktop Charger, Carry Case and 3m extension cord for use with a TV or music system

2003
CES AwardGood Housekeeping's
Good Buy
Award**VIALTA Beamer 80™***Telephone Video Station*Designed & Engineered For:

People to add video to their phone calls, using their existing phone and analogue phone line. Note the quality of the phone line connection may impact the quality of the video being transmitted

Major Features

3.5" LCD Screen
Skid-proof Base & Tinted Acrylic Frame
3 Viewing Choices - Self, Other Party or Combo view
Snapshot - send a high resolution video image
Privacy Option - put video transmission on hold
Recessed Control Buttons & Detailed Movement control
Fully ITU-T Standard H.324 compliant
Built-in CMOS camera
Audio Input/Output for phone handset or speakerphone
Network Interface: GSTN (RJ11) Modem
Transmission Speed: maximum 33.6Kbps
Dimensions: 8.3" (H) x 6" (W) x 1.9" (D)
Includes Power Adaptor

**POLYCOM COMMUNICATOR 100***Audio Conferencing System for VoIP Calls*Designed & Engineered For:

High Fidelity Hands-Free VoIP calls.

Major Features

High Fidelity Wideband Voice Quality
Two High Quality Microphones
Echo Cancellation & Full Duplex Technology
Skype Certified
Answer/End Button, Volume Control & Mute
Stereo Headset Port
Integrated USB Cable stores inside unit
Dimensions (mm): 133.3 (L) x 82.3 (W) x 21.6 (D)
Weight: 151 grams
Includes Neoprene Carry Case
Colours: Blue & Grey

**Headset
Capable****Indent Orders Only****AASTRA 9112i***1-Line SIP IP Speakerphone*Designed & Engineered For:

General Business, SoHo and Residential Use.

Major Features

Speakerphone with On-Hook Dialling
3-Line Backlit LCD Display
4 Navigational & 2 Programmable Keys
11 predefined hard keys including Callers Log, Conference, Call Transfer, Redial, Options Directory, Save, Delete, Mute & Speakerphone/Headset
Modular RJ9 Headset Connector
10/100 Mbps Ethernet port
Codecs (G.711 u-law and G.729A)
Includes Power Adaptor & Desk Stand
Third Party Interoperability
BROADSOFT® BROADWORKS (Release 11.1), NORTEL NETWORKS MCS 5100 & 5200, SYLANTRO SIP (VERSION 3.0.2) & ASTERISK.

Telephone Video Stations & IP Telephones

**VIALTA Beamer TV™***Telephone Video Station for connection to TV*Designed & Engineered For:

People to add video to their phone calls, using their existing TV, phone and analogue phone line. Note the quality of the phone line connection may impact the quality of the video being transmitted.

Major Features

Works on any PAL (NZ standard) TV
3 Viewing Choices - Self, Other Party or Combo view
Snapshot - send a high resolution video image
Privacy Option - put video transmission on hold
Recessed Control Buttons & Detailed Movement control
Fully ITU-T Standard H.324 compliant Built-in CMOS camera
Audio Input/Output for phone handset or speakerphone
Network Interface: GSTN (RJ11)
Modem Transmission Speed: maximum 33.6Kbps
Includes Remote Control & Camera lens Cover.
Dimensions: 1.5" (H) x 7.6" (W) x 6.0" (D)
Includes Power Adaptor

**DORO 212IPC***USB Telephone*Designed & Engineered For:

General Business, SoHo and Residential Use.

Major Features

Keypad
Real Time Volume Adjustment Button
Plugs into USB Port
Supports most Softphone programmes, protocol independent, H.323 or SIP, conforms to USB 12 Mbps 1.1 standard, conforms to USB audio device release 1.0.

DORO 225IPC*USB Telephone with LCD Display*Designed & Engineered For:

General Business, SoHo and Residential Use for VoIP calls

Major Features

Large Blue Backlit Display
Caller ID Ready
Keypad
Headset Port
Echo Cancellation & Noise Reduction Technology
Plugs into USB Port
Supports most Softphone programmes, protocol independent, H.323 or SIP, conforms to USB 12 Mbps 1.1 & 2.0 standards, conforms to USB audio device release 1.0
Colours: Black, Green & Orange

**Headset
Capable****Indent Orders Only****AASTRA 9133i***3-Line SIP IP Speakerphone*Designed & Engineered For:

General Business, SoHo and Residential Use.

Major Features

3 Line Call Appearance (Handles 10 simultaneous calls)
Speakerphone with On-Hook Dialling
3-Line Adjustable Backlit LCD Display
4 Navigational & 7 Programmable Keys
10 predefined hard keys including Conference, Call Transfer, Redial, Options Directory, Save, Delete, Mute & Speakerphone/Headset
Modular RJ9 Headset Connector
Dual 10/100 Mbps switched Ethernet ports
Codecs (G.711 u-law and G.729A)
Includes Power Adaptor & Desk Stand
Third Party Interoperability
BROADSOFT® BROADWORKS (Release 11.1), NORTEL NETWORKS MCS 5100 & 5200, SYLANTRO SIP (VERSION 3.0.2) & ASTERISK.

**VIALTA Beamer FX™***Compact Video Station & Digital Picture Frame Combo*Designed & Engineered For:

People to add video to their phone calls, using their existing phone and analogue phone line. Also for displaying/presenting digital photos.

Major Features

3.5" LCD Screen
Skid-proof Base & Tinted Acrylic Frame
3 Viewing Choices - Self, Other Party or Combo view
Snapshot - send a high resolution video image
Privacy Option - put video transmission on hold
Recessed Control Buttons & Detailed Movement control
Fully ITU-T Standard H.324 compliant Built-in CMOS camera
Audio Input/Output for phone handset or speakerphone
Network Interface: GSTN (RJ11)
Modem Transmission Speed: maximum 33.6Kbps
Dimensions: 8.3" (H) x 6" (W) x 1.9" (D)
Includes Power Adaptor

Digital Picture Frame Features

Save digital pictures into the Beamer FX's internal memory
Send and receive digital pictures between Beamer FXs.
Two memory card slots let you display pictures directly from your memory cards. 4-in-1 reader reads SD™, Memory Stick™, SmartMedia® and MultiMediaCard™ formats.
CompactFlash card reader reads CompactFlash® cards.
Save up to 12 digital pictures in Beamer FX's memory
Display one picture continuously or a custom slide show.
3 slideshow interval settings (Slow, Medium & Fast).

LIP6812D**LIP6824CD****Indent Orders Only****LG-NORTEL LIP SERIES IP PHONES***SIP IP Speakerphones*Designed & Engineered For:

Use with a SIP Compliant PBX, Softswitch or IP Centrex solutions for General Business, SoHo or Residential.

Major Features

Flexible Buttons & Soft Keys & Directional Keys
Multiple & Shared Line Appearances
2.5mm Headset Port
Net2phone, SIP (Broadsoft & Sylanro) and MGCP
Models Available
LIP6804N, LIP6812D, LIP6830D, LIP6824CD & LIP6848DSS

**Headset
Capable****Indent Orders Only****AASTRA 480i***4-Line SIP IP Speakerphone*Designed & Engineered For:

General Business, SoHo and Residential Use.

Major Features

Speakerphone
Configurable up to 4 lines depending on IP PBX or Softswitch solution
Large 8-Line LCD Display & 3 Lines for Soft Labels
6 Customisable Soft Keys
8 Predefined Hard Keys for common call handling features like Transfer, Conferencing, Intercom, etc.
RJ11 Headset Port for amplified business headsets
Dual 10/100 Mbps switched Ethernet ports
Codecs (G.711 u-law and G.729A)
Includes Power Adaptor & Desk Stand
Third Party Interoperability
SPHERICALL MGCP, BROADSOFT® BROADWORKS (Release 11.1), NORTEL NETWORKS MCS 5100 & 5200, SYLANTRO SIP (VERSION 3.0.2) & ASTERISK.
Also Available: 480i-CT with Cordless Handset

480i-CT



ORICOM AM880

Fully Digital Answering Machine with Caller ID

Designed & Engineered For: Residential & SOHO Business Use
Major Features

- Up to 30 seconds Outgoing Message
- Up to 40 Minutes Recording Time
- 5 minutes maximum message length
- Time & Day Stamp & Call Screening
- LCD Display with Contrast Control & Real Time Clock
- Caller ID Ready with "0" insertion for One-Touch Dialback
- 64 Number Log & New Call Indicator/Counter
- Two-Way Conversation & Personal Memo Recording
- Announce Only Mode
- Flashing LED Message Counter & Character Display
- Playback Volume Control
- Selectable Ring Delay (2 or 6 & Toll Saver)
- Voice Activated Auto Disconnect (60/300 seconds)
- Remote Access including Remote Turn ON
- Message Battery Back-up (9v Battery not included)
- Includes Power Adaptor

AUDIOLINE 838

Fully Digital Answering Machine
Designed & Engineered For: Residential & SOHO Business Use

- Major Features
- Up to 30 seconds Outgoing Message
 - Up to 35 Minutes Recording Time
 - Programmable 1 min or 5 min maximum message
 - Time & Day Stamp & Call Screening
 - Two-Way Conversation & Personal Memo Recording
 - Flashing LED Message Counter & Character Display
 - Playback Volume Control
 - Selectable Ring Delay (2 or 7 & Toll Saver)
 - Voice Activated Auto Disconnect (60/300 seconds)
 - Remote Access including Remote Turn ON
 - Message Battery Back-up (9v Battery not included)
 - Includes Power Adaptor



ORICOM CID99

Caller ID Adjunct
Designed & Engineered For: Use with Network Caller ID Services

- Major Features
- Adjustable LCD Display shows Incoming Number, Time & Date of Call and Sequence Number of Calls
 - Stores 99 Incoming Call Numbers
 - One-Touch Callback with "0" insertion
 - Review & Delete Keys
 - New Call Indicator & Low Battery Indicator
 - Wall Mountable (Screws)
 - Includes 3 AAA Batteries.



THOMSON SpeedTouch 536

USB or Ethernet ADSL Gateway
Designed & Engineered For: Personal and Business Use

- Major Features
- 1 Ethernet Port & 1 USB Port
 - Plug and Play installation
 - Set-up Wizard user guide
 - Supplied Software installs in a few clicks
 - Simple Software Upgrade Procedure
 - Built-in Firewall
 - Interfaces: LAN - 10/100/Base-T (RJ45), MDI/MDI-x autosensing
 - WAN- Line RJ11 for ADSL, ADSL2 & ADSL2+ POTS & ISDN
 - Speed: Up to 8Mbps downstream for POTS and ISDN/Up to 832kbps upstream for POTS and 640kbps for ISDN
 - Multi-User Router, ATM-Extensive Multi, Bridging, IP Routing
 - Management - OS independent & ADvanced Management
 - Drivers: Windows 98, 98SE, 2000, ME, XP, Mac OS9.0 & X
 - Includes: 536 gateway, ethernet cable (RJ45), RJ11 telephone cable, USB cable, Power Adaptor, quick reference guide and Software CD-ROM.



THOMSON SpeedTouch 546

4-port Multi-User ADSL Gateway
Designed & Engineered For: Multi-User Personal and Business Use

- Major Features
- 4 port Ethernet switch
 - Plug and Play installation
 - Set-up Wizard user guide
 - Supplied Software installs in a few clicks
 - Simple Software Upgrade Procedure
 - Built-in Firewall
 - Interfaces: LAN - 10/100/Base-T (RJ45), MDI/MDI-x autosensing
 - WAN- Line RJ11 for ADSL, ADSL2 & ADSL2+ POTS/ISDN
 - Speed: Up to 8Mbps downstream for POTS and ISDN/Up to 832kbps upstream for POTS and 640kb/s for ISDN
 - Multi-User Router ATM-Extensive Multi, Bridging, IP Routing
 - Management - OS independent & ADvanced Management
 - Drivers: Windows 98, 98SE, 2000, ME, XP, Mac OS9.0 & X
 - Includes: 546 gateway, ethernet cable (RJ45), RJ11 telephone cable, Power Adaptor, quick reference guide and Software CD-ROM.

METRON

Telephone Accessories
Designed & Engineered For: Residential & Business Use

- Models Available
- 2 Outlet Adaptor
 - 3 Outlet Adaptor
 - 3 metre Extension Cord
 - 5 metre Extension Cord
 - 10 metre Extension Cord
 - 15 metre Cord Caddy



THOMSON SpeedTouch 110g

Wireless 802.11 PC Card
Designed & Engineered For: Personal and SoHo Use

- Major Features
- Compatible with SpeedTouch Wireless Home Install Wizard
 - High Speed for wireless LAN connection, up to 54mb/s.
 - Backward compatible to IEEE 802.11b WLAN infrastructure.
 - User friendly utility for SSID, security setup and site survey.
 - Wireless data encryption with 64, 128 secure encryption.
 - WPA encryption and authentication (WPA personal).
 - Hardware built-in dual diversity antenna.
 - Firmware upgradeable.
 - Applications: Home networking, wireless multimedia, wireless office, mobile networking
 - Operating System: Windows 98SE, ME, 2000 and XP
 - Security: Wired Equivalent Privacy (WEP)
 - Operating Channels: IEEE 802.11g



THOMSON SpeedTouch 121g

Wireless 802.11 USB Adaptor
Designed & Engineered For: Personal and SoHo Use

- Major Features
- Compatible with SpeedTouch Wireless Home Install Wizard
 - High Speed for wireless LAN connection, up to 54mb/s.
 - Backward compatible to IEEE 802.11b WLAN infrastructure.
 - User friendly utility for SSID, security setup and site survey.
 - Wireless data encryption with 64, 128 secure encryption
 - WPA encryption and authentication (WPA personal).
 - External dipole antenna. Supports USB v2.0.
 - Firmware upgradeable.
 - Applications: Home networking, wireless multimedia, wireless office, mobile networking
 - Hardware: USB 2.0 interface, 802.11 54g chipset-on-board
 - Operating System: Windows 98SE, ME, 2000 and XP
 - Security: Wired Equivalent Privacy (WEP) Operating Channels: IEEE 802.11g



THOMSON SpeedTouch 585

4-port Wireless ADSL Gateway
Designed & Engineered For: Mobile Personal and Business Use

- Major Features
- Modem: ADSL, ADSL, & ADSL2+
 - 4 Ethernet ports
 - 802.11g Wireless LAN Access Point
 - Wi-Fi Indoor Coverage: Up to 60 metres
 - Plug and Play installation
 - Easy Set-up Wizard user guide
 - Supplied Software installed in a few clicks
 - Integrated ICSA Certified Firewall, 802.11x/PSK WPA, 64/128bit encryption, client registration
 - 10/100/Base-T HD/FD, MDI/MDI-x autosensing
 - WAN - Line RJ11 for ADSL
 - LED Indicators for all interface ports
 - Dynamic Rate Switching
 - Manual/auto channel selection
 - Performance Optimization for ADSL Traffic
 - Wireless Distribution System (WDS)
 - UPnP enables game tech (PS2, Xbox live, DirectPlay...)
 - UPnP enables conferencing of Microsoft Messenger
 - Transparent Bridging, PPPoA routing, classical IP and IP routing, Mac encapsulated routing
 - Management wireless Home Install Wizard, Intuitive Web interface, Remote and host software download, DHCP server and replay, DHCP-to-PPP spoofing, DNS server and relay
 - Includes: 585 gateway, ethernet cable (RJ45), RJ11 telephone cable, USB cable, Power Adaptor, quick reference guide and Software CD-ROM, Wall Mounting Screws and Plugs, and a Stand for vertical use.

SpeedTouch 605



SpeedTouch 608

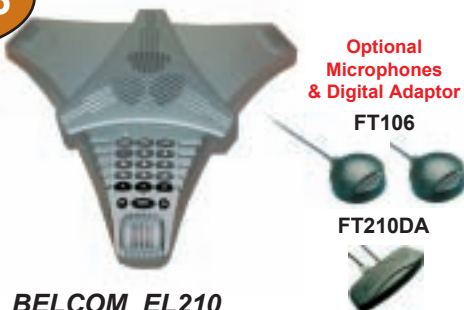


THOMSON SpeedTouch 605 & 608

4-port ADSL Business Router

- Designed & Engineered For: Multi-User Personal and Business Use
- Major Features
- 4 port Ethernet switch & Serial Port
 - Plug and Play installation
 - Easy Set-up Wizard user guide
 - Supplied Software installs in a few clicks
 - Simple Software Upgrade Procedure
 - Stateful Firewall (ICSA Certified on SpeedTouch 608)
 - Interfaces: LAN - 10/100/Base-T (RJ45), MDI/MDI-x autosensing,
 - WAN - Line RJ11 for ADSL, ADSL2 & ADSL2+ POTS/ISDN
 - Speed: Up to 8Mbps downstream for POTS and ISDN/Up to 832kbps upstream for POTS and 640kb/s for ISDN
 - Multi-User Router ATM-Extensive Multi, Bridging, VLAN (802.1 q/p), IP Routing, Multi-port Router (8 PVCs)
 - Management - OS independent & ADvanced Management
 - SpeedTouch 608 - Basic & Advanced Tunnels
 - Drivers: Windows 98, 98SE, 2000, ME, XP, Mac OS9.0 & X
 - Includes: router, ethernet cable (RJ45), RJ11 telephone cable, USB cable, Power Adaptor, quick reference guide and Software CD-ROM.

Audio Conferencing Systems



Optional
Microphones
& Digital Adaptor
FT106
FT210DA

BELCOM EL210

Audio Conferencing System
Designed & Engineered For:
 Conference & Meeting Rooms, Executive Offices,
 School Rooms
Major Features
 Connects to Analogue Telephone Line
Full Duplex Speakerphone
 Automatic Gain Control (AGC)
 3 built-in microphones (360 degree coverage)
 Integrated keypad with Recall & Last Number Redial
Mute Button with LED Indicator
 On/Off Speaker Button with Volume Control
 Power Button with LED Indicator
RCA audio jack supports a recorder
Combined Power/Telephone Line
Optional Accessories
 FT106 Two Wired Extension Microphones
 FT210DA Digital Adaptor for use with a Digital Phone

DECT



**Base Station
Included**

ORICOM C1000

DECT Wireless Audio Conferencing System
Designed & Engineered For:
 Conference & Meeting Rooms, Executive Offices,
 School Rooms, Hotel & Conference Facilities
Major Features
DECT Communication between base and conference unit
 Connects to Analogue Telephone Line
Full Duplex Speakerphone
Digital Signal Processing (DSP) with Voice Encryption
Echo Cancellation with 16 Level Digital Volume Control
3 Omni-directional Microphones
Illuminated LCD with Call Timer & Battery Status
PhoneBook (10 Name & Number Locations)
Any Key Answer, Last Number Redial, Recall & Mute
5 Ringer Melody Selection
Wall Mountable Base Unit with 2.5mm Audio Jack
TalkTime: Up to 6 hours Standby Time: Up to 80 hours
Out of Range Alert, Base to Pod Paging,
Includes Rechargeable NiMH Battery Pack & Charge Cable

DECT



**Optional
Base Station,
Microphones &
Remote Control**

KONFTEL 200W

DECT Wireless Audio Conferencing System
Designed & Engineered For:
 Conference & Meeting Rooms & School Rooms
 up to 30 m2.
Major Features
DECT Communication between base and conference unit
Operating Range: Up to 50m indoors/300m outdoors
Connects to DECT GAP compatible Telephone Systems
Connects to Analogue Telephone Line via Base Station
Full Duplex Speakerphone
Digital Signal Processing (DSP) with Voice Encryption
Echo Cancellation with 16 Level Digital Volume Control
3 Omni-directional Microphones
Large Illuminated LCD with Call Timer & Battery Status
PhoneBook (10 Name & Number Locations)
Any Key Answer, Last Number Redial, Recall & Mute
Wall Mountable Base Unit with 2.5mm Audio Jack
TalkTime: Up to 6 hours Standby Time: Up to 80 hours
Out of Range Alert, Base to Pod Paging
 Tape Recorder Output
Includes Rechargeable NiMH Battery Pack & Charge Cable
Optional Accessories
 Wall Mounting Kit
 Two Wired Extension Microphones
 Remote Control
 Tape Recorder Cable
 DECT Base Station



**Optional
Microphones**

KONFTEL 50 & 60W

Audio Conferencing System
Designed & Engineered For:
 Connection to a system telephone, cellular phone,
 DECT cordless phone or a computer.
Major Features
 Connects to Analogue Telephone Line
OmniSound™ Full Duplex Omnidirectional microphone & three surround sound speakers
 360 degree sound coverage & sound transmission
 Recall & Last Number Redial
Mute Button with LED Indicator
 Volume Control
Combined Power/Telephone Line
60W Only - Bluetooth™ Wireless Connection
Optional Accessories
 Wall Mounting Bracket
 DECT & Cellular Telephone Connector Cables
60W Only - Two Wired Extension Microphones

KONFTEL 100

Audio Conferencing System
Designed & Engineered For:
 Offices and Conference Rooms up to 30 m2
Major Features
 Connects to Analogue Telephone Line
OmniSound™ Full Duplex Omnidirectional microphone & three surround sound speakers
 360 degree sound coverage & sound transmission
 Integrated keypad with Recall & Last Number Redial
Mute Button with LED Indicator
 Volume Control
Combined Power/Telephone Line
Optional Accessory
 Wall Mounting Kit



**Optional
Microphones
& Remote
Control**

KONFTEL 200

Deluxe Audio Conferencing System
Designed & Engineered For:
 Conference & Meeting Rooms & School Rooms
 up to 70 m2.
Major Features
 Connects to Analogue Telephone Line
LCD Graphic Backlit Display includes number dialled, call duration and time & date
OmniSound™ Full Duplex Omnidirectional microphone & three surround sound speakers
 360 degree sound coverage & sound transmission
 Integrated keypad with Recall & Last Number Redial
Mute Button with LED Indicator
Phone Book
 Volume Control
Combined Power/Telephone Line
Optional Accessories
 Wall Mounting Kit
 Two Wired Extension Microphones
 Remote Control



**Optional
Microphones
& Remote
Control**

KONFTEL 200/NI

ISDN Audio Conferencing System
Designed & Engineered For:
 Conference & Meeting Rooms, Executive Offices,
 School Rooms up to 30 m2.
Major Features
Connects to Analogue or ISDN Telephone Lines
Easy switching between Analogue & ISDN Lines
ISDN Caller ID
LCD Graphic Backlit Display includes number dialled, call duration and time & date
OmniSound™ Full Duplex Omnidirectional microphone & three surround sound speakers
 360 degree sound coverage & sound transmission
 Integrated keypad with Recall & Last Number Redial
Mute Button with LED Indicator
Phone Book
 Volume Control
Combined Power/Telephone Line
Optional Accessories
 Wall Mounting Kit
 Two Wired Extension Microphones
 Remote Control



**Optional
Microphones
& Digital Adaptor**

AETHRA The VOICE

Audio Conferencing System
Designed & Engineered For:
 Conference & Meeting Rooms, Executive Offices,
 School Rooms, Hotel & Conference Facilities
Major Features
 Connects to Analogue Telephone Line
Full Duplex Speakerphone
Digital Signal Processing & Auto Gain Control
Echo Cancellation for truer conversations
Adaptive Postfilter reduces background noise
 3 built-in microphones (360 degree coverage)
100 Speed Dial Memories
 Integrated Keypad with Mute & Last Number Redial
 Volume Control & Recall Button
 Auxiliary Recording Output & Auxiliary Phone Port
Combined Power/Telephone Line
Optional Accessories
 Two Wired Extension Microphones
 Digital Telephone Adaptor

**Optional
Microphones
& Digital Adaptor**

AETHRA The VOICE ISDN

Audio Conferencing System
Designed & Engineered For:
 Conference & Meeting Rooms, Executive Offices,
 School Rooms, Hotel & Conference Facilities
Major Features
 Connects to ISDN Telephone Line
Full Duplex Speakerphone
Digital Signal Processing & Auto Gain Control
Echo Cancellation for truer conversations
Adaptive Postfilter reduces background noise
 3 built-in microphones (360 degree coverage)
100 Speed Dial Memories
 Integrated Keypad with Mute & Last Number Redial
 Volume Control & Recall Button
 Auxiliary Recording Output & RS232 Data Port
Combined Power/Telephone Line
Optional Accessories
 Two Wired Extension Microphones
 Digital Telephone Adaptor

Audio Conferencing Systems



AETHRA The VOICE Plus

Deluxe Audio Conferencing System
 Designed & Engineered For:
 Conference & Meeting Rooms, Executive Offices,
 School Rooms, Hotel & Conference Facilities

Major Features
Connects to Analogue Telephone Line
 Full Duplex Speakerphone
Digital Signal Processing & Auto Gain Control
Echo Cancellation for truer conversations
Adaptive Postfilter reduces background noise
 3 built-in microphones (360 degree coverage)
LCD Display
100 Name & Number Phonebook
 Integrated Keypad with Mute & Last Number Redial
 Volume Control & Recall Button
 Auxiliary Recording Output & Auxiliary Phone Port
Combined Power/Telephone Line
Included Accessory
Remote Control
Optional Accessories
 Two Wired Extension Microphones
 Digital Telephone Adaptor

AETHRA The VOICE Plus-ISDN

Deluxe Audio Conferencing System
 Designed & Engineered For:
 Conference & Meeting Rooms, Executive Offices,
 School Rooms, Hotel & Conference Facilities

Major Features
Connects to ISDN Telephone Line
 Full Duplex Speakerphone
Digital Signal Processing & Auto Gain Control
Echo Cancellation for truer conversations
Adaptive Postfilter reduces background noise
 3 built-in microphones (360 degree coverage)
LCD Display
100 Name & Number Phonebook
 Integrated Keypad with Mute & Last Number Redial
 Volume Control & Recall Button
 Auxiliary Recording Output & RS232 Data Port
Combined Power/Telephone Line
Included Accessory
Remote Control
Optional Accessories
 Two Wired Extension Microphones
 Digital Telephone Adaptor

POLYCOM SoundStation2 Basic

Non-Expandable Audio Conferencing System
 Designed & Engineered For:
 Conference & Meeting Rooms, Executive Offices,
 School Rooms, Hotel & Conference Facilities

Major Features
Connects to Analogue Telephone Line
Full Duplex Speakerphone
 3 built-in microphones (360 degree coverage)
 Integrated Keypad with On/Off, Conference (Flash), Mute,
 Volume Adjustment, User Selectable Ring Tones
 RCA Auxiliary Audio Jack
Combined Power/Telephone Line



Microphones Included

POLYCOM SoundStation2 plus-EX

Audio Conferencing System
 Designed & Engineered For:
 Conference & Meeting Rooms, Executive Offices,
 School Rooms, Hotel & Conference Facilities

Major Features
Connects to Analogue Telephone Line
Full Duplex Speakerphone
 3 built-in microphones (360 degree coverage)
135x65 pixel Backlit Graphical LCD Display
 Integrated Keypad with On/Off, Conference (Flash), Mute,
 Volume Adjustment menu navigation and 3 context
 dependent soft keys, User Selectable Ring Tones
25 Entry PhoneBook, Caller ID Ready (Type 1)
 2.5mm jack for connection to other devices
 RCA Auxiliary Audio Jack
Combined Power/Telephone Line
Included Accessory
 Two wired extension microphones.



POLYCOM SoundStation2 plus-NE

Audio Conferencing System
 Designed & Engineered For:
 Conference & Meeting Rooms, Executive Offices,
 School Rooms, Hotel & Conference Facilities

Major Features
Connects to Analogue Telephone Line
Full Duplex Speakerphone
 3 built-in microphones (360 degree coverage)
135x65 pixel backlit graphical LCD Display
 Integrated Keypad with On/Off, Conference (Flash), Mute,
 Volume Adjustment menu navigation and 3 context
 dependent soft keys, User Selectable Ring Tones
25 Entry PhoneBook, Caller ID Ready (Type 1)
 2.5mm jack for connection to other devices
 RCA Auxiliary Audio Jack
Combined Power/Telephone Line

POLYCOM SoundStation2 plus

Audio Conferencing System
 Designed & Engineered For:
 Conference & Meeting Rooms, Executive Offices,
 School Rooms, Hotel & Conference Facilities

Major Features
Connects to Analogue Telephone Line
Full Duplex Speakerphone
 3 built-in microphones (360 degree coverage)
135x65 pixel backlit graphical LCD Display
 Integrated Keypad with On/Off, Conference (Flash), Mute,
 Volume Adjustment menu navigation and 3 context
 dependent soft keys, User Selectable Ring Tones
25 Entry PhoneBook, Caller ID Ready (Type 1)
 2.5mm jack for other devices
 RCA Auxiliary Audio Jack
Combined Power/Telephone Line
Optional Accessory
 Two wired extension microphones.



POLYCOM SoundStation IP4000 SIP

IP Audio Conferencing System
 Designed & Engineered For:
 Conference & Meeting Rooms, Executive Offices, School
 Rooms, Hotel & Conference Facilities

Major Features
Connects to Ethernet 10/100BaseT
Full Duplex Speakerphone & Multiple Call Support
 3 built-in microphones (360 degree coverage)
High Resolution Backlit Graphical LCD Display
 Integrated Keypad with On-Hook/Off-Hook, Redial, Mute,
 Volume Control, Menu Navigation Keys & 3 Softkeys
 User Selectable Ring Tones
25 Entry PhoneBook, Caller ID Ready (IP telephony)
 Protocol Support: IETF SIP (RFC3261)
 Supported Codecs: G.711 and G.729a
**Includes 8m Combined Power/Ethernet Cable and
 2m CAT 5 Ethernet Cable**
Optional Accessory
 Two wired extension microphones.



Base Station Included



Optional Microphones

Base Station Included

POLYCOM SoundStation2W Basic

WDECT Wireless Audio Conferencing System
 Designed & Engineered For:
 Conference & Meeting Rooms, Executive Offices,
 School Rooms, Hotel & Conference Facilities

Major Features
DECT, Digital Spread Spectrum
Operating Range: 50m from base station
Connects to Analogue Telephone Line
Full Duplex Speakerphone
 3 built-in microphones (360 degree coverage)
High Resolution Backlit Graphical LCD Display
 Integrated Keypad with On/Off, Conference (Flash), Mute,
 Volume Adjustment menu navigation and 3 context
 dependent soft keys
25 Entry PhoneBook, Caller ID Ready (Type 1)
1.3m cable with 2.5m Headset plugs for Cellular Phone
 Charge Time: 4 Hours
 Talktime: 12 Hours Standby Time: 80 Hours
Combined Power/Telephone Line
 Includes: Conference Unit, Wireless Base Station & Lithium
 Ion Battery Pack, Battery Charger & 1.3m Cable with
 headset plugs.

POLYCOM SoundStation2W-EX

WDECT Wireless Audio Conferencing System
 Designed & Engineered For:
 Conference & Meeting Rooms, Executive Offices,
 School Rooms, Hotel & Conference Facilities

Major Features
DECT, Digital Spread Spectrum
Operating Range: 50m from base station
Connects to Analogue Telephone Line
Full Duplex Speakerphone
 3 built-in microphones (360 degree coverage)
High Resolution Backlit Graphical LCD Display
 Integrated Keypad with On/Off, Conference (Flash), Mute,
 Volume Adjustment menu navigation and 3 context
 dependent soft keys
25 Entry PhoneBook, Caller ID Ready (Type 1)
1.3m cable with 2.5m Headset plugs for Cellular Phone
 Charge Time: 4 Hours
 Talktime: 12 Hours Standby Time: 80 Hours
Combined Power/Telephone Line
 Includes: Conference Unit, Wireless Base Station & Lithium
 Ion Battery Pack, Battery Charger & 1.3m Cable with
 headset plugs.
Optional Accessory
 Two wired extension microphones.

Microphones & Sub-woofer Included



POLYCOM SOUNDSTATION VTX 1000

World's First Wideband Audio Conferencing System
 Designed & Engineered For:
 Conference & Meeting Rooms, Executive Offices,
 School Rooms, Hotel & Conference Facilities

Major Features
Connects to Analogue Telephone Line
Full Duplex Speakerphone
 3 built-in microphones (360 degree coverage)
High Resolution Backlit LCD Display
Noise Reduction Technology
 Auto mic selection - only 1 mic is on at a time
Downloadable Ring Tones, Treble/Bass Controls
 Integrated Keypad with On/Off, Conference (Flash),
 Mute, Volume Adjustment, Menu Navigation and
 3 context dependent soft keys
 Caller ID Ready (Type 1), RCA Auxiliary Audio Jack
Combined Power/Telephone Line
Included Accessories
 Sub-woofer for audio extension down to 80 Hz
 Two wired extension microphones.

Personal RF Communication Products



AUDIOLINE WT50

2-Way UHF Personal Radio Service Radio Telephone
 Designed & Engineered For:
 Recreational and Selected Business Activities
Major Features
 40 Channel 2-Way UHF CB Radio
 No Operating Licence Required & No Call Charges
 Operating Range: Up to 3km
Backlit LCD Display
Speaker/Microphone Outlet
 Volume Control
Headset Jack
 Requires AAA Batteries to Operate
 Includes: 2 Handsets with Belt Clips



ORICOM PMR555

2-Way UHF Personal Radio Service Radio Telephone
 Designed & Engineered For:
 Recreational and Selected Business Activities
Major Features
 40 Channel 2-Way UHF CB Radio
 No Operating Licence Required & No Call Charges
 Operating Range: Up to 3km
Range Extender Mode (Duplex Mode)
Backlit LCD Display
 Volume Control
 Roger Beep Confirmation Tone
 Keypad Lock & Call Tone Alert
In-Use Time: Up to 15 Hours
 Requires 3 AAA Alkaline Batteries to operate
 Includes: 2 Handsets with Belt Clips



ORICOM PMR888

2-Way UHF Personal Radio Service Radio Telephone
 Designed & Engineered For:
 Recreational and Selected Business Activities
Major Features
 40 Channel 2-Way UHF CB Radio
 No Operating Licence Required & No Call Charges
 Operating Range: Up to 3km
Range Extender Mode (Duplex Mode)
Backlit LCD Display
Large Antenna for Better Reception
 Volume Control
 Roger Beep Confirmation Tone
 VOX Operation & Call Tones
 Keypad Lock & Nuisance Delete
Headset Jack
In-Use Time: Up to 12 Hours
 Includes: 2 Handsets with Detachable Belt Clips,
 Rechargeable NiMH Batteries & Plug-in Charger



DORO WT89

2-Way UHF Personal Radio Service Radio Wristwatch
 Designed & Engineered For:
 Recreational and Selected Business Activities
Major Features
 40 Channel 2-Way UHF CB Radio
 No Operating Licence Required & No Call Charges
 Operating Range: Up to 3km
Splashproof
Wristwatch with Stopwatch Function
Backlit LCD Display
Digital Volume Control (8 levels)
 Roger Beep Confirmation Tone
4 VOX Settings (including OFF)
Headset Jack (Headset included)
Dimensions (mm): 62 (L) x 53 (W) x 25 (D)
 Weight: 85 grams
 Includes: Lithium-ion Battery, Plug-in Charger & Headset



DORO WT81-AP

2-Way UHF Personal Radio Service Radio Telephone
 Designed & Engineered For:
 Recreational and Selected Business Activities
Major Features
 40 Channel 2-Way UHF CB Radio
 No Operating Licence Required & No Call Charges
 Operating Range: Up to 3km
Backlit LCD Display
 Volume Control
 Roger Beep Confirmation Tone
 VOX (Voice Activation) & Calling Tones
Headset Jack (headset included)
Included Accessory Pack
Dual Desktop Charger, 8 Rechargeable NiMH Battery, 2 Nylon Carry Cords, 2 Interchangeable Faceplates & 2 Headsets.



DORO WT86

2-Way UHF Personal Radio Service Radio Telephone
 Designed & Engineered For:
 Recreational and Selected Business Activities
Major Features
 8 Channel 2-Way UHF CB Radio
 No Operating Licence Required & No Call Charges
 Operating Range: Up to 3km
Backlit LCD Display
Digital Volume Control (8 Levels)
 Roger Beep Confirmation Tone
 3 VOX Settings & 5 Call Tones
Headset Jack (headset included)
Dimensions (mm): 120 (L) x 46 (W) x 35 (D)
 Weight: 105 grams
Included Accessory Pack
Rechargeable NiMH Batteries, Dual Desktop Charger, 2 Headsets & 2 Detachable Belt Clips.



ORICOM PMR1000R

2-Way UHF Personal Radio Service Radio Telephone
 Designed & Engineered For:
 Recreational and Selected Business Activities
Major Features
1 Watt of Power
 40 Channel 2-Way UHF CB Radio
 No Operating Licence Required & No Call Charges
Operating Range: Up to 7km
Range Extender Mode (Duplex Mode)
Backlit LCD Display
 Volume Control
 Roger Beep Confirmation Tone
 VOX, Call Tone Alert & Channel Busy Indicator
 Keypad Lock & Nuisance Delete
Headset Jack
Included Accessory Pack
 Dual Desktop Charger, 2 NiMH Battery Packs,
 2 Interchangeable Faceplates & 2 VOX Headsets.



MOTOROLA Talkabout® T5509R

2-Way UHF Personal Radio Service Radio Telephone
 Designed & Engineered For:
 Recreational and Selected Business Activities
Major Features
1 Watt Power
 40 Channel 2-Way UHF CB Radio
 No Operating Licence Required & No Call Charges
Operating Range: Up to 7km
Range Extender Mode (Duplex Mode)
Backlit LCD Display
 Volume Control
 Roger Beep Confirmation Tone
 Keypad Lock, & Tones, Time-out Timer, VOX, Call Tones
 & Busy Channel Indicator
Headset Jack
Included Accessory Pack
 Dual Desktop Charger, 2 NiMH Battery Packs
 & 2 Interchangeable Faceplates.



MOTOROLA Talkabout® SX709R

2-Way UHF Personal Radio Service Radio Telephone
 Designed & Engineered For:
 Recreational and Selected Business Activities
Major Features
2 Watts Power
 40 Channel 2-Way UHF CB Radio
 No Operating Licence Required & No Call Charges
Operating Range: Up to 10km
Range Extender Mode (Duplex Mode)
Backlit LCD Display
Vibration Alert
 Volume Control, Roger Beep Confirmation Tone
 Keypad Lock & Tones, Time-out Timer, VOX with
 Optional Headset, Call Tones & Busy Channel Indicator
Headset Jack
Included Accessory Pack
 2 Belt Clips, 2 Holsters, 2 NiMH Rechargeable Battery
 Packs & a Charging Kit.



MAXON SP140

Handheld Radio Telephone
 Designed & Engineered For:
 Commercial Handheld RT Applications such as Security, Construction, Surveying, Transport, Local Government, etc.
Major Features
 VHF & UHF Operating Frequencies
16 Programming Channels with Scanning
Programming Channel Spacing (12.5/25kHz)
Programmable Power Output (1-5 watts Hi-Lo)
 Busy Channel Lockout, Time out Timer
 Low Battery Indicator
 MIL STD 810 C, D, E & IEC 529
 Package includes RT, Antenna, Belt Clip & Battery
Accessories
 A Full Range of Accessories is available



MAXON SP210

Handheld Radio Telephone
 Designed & Engineered For:
 Commercial Handheld RT Applications such as Security, Construction, Surveying, Transport, Local Government, etc.
Major Features
 UHF 440-470MHz Operating Frequency
199 Channels
13 Scan Groups with 16 Channels per Group
Programming Channel Spacing (12.5 & 25 kHz)
Programmable Power Output (1-5 watts Hi-Lo)
 Keypad Lock
 3-Digit Display
MIL STD 810F Approved
 Package includes RT, Antenna, Belt Clip & Battery
Accessories
 A Full Range of Accessories is available



MAXON PM100

Mobile Radio Telephone
 Designed & Engineered For:
 Commercial Mobile RT Applications such as Couriers, Taxis, Haulage
Major Features
 VHF & UHF Operating Frequencies
4 Channels - Wide Band Operation
Programmable Channel Spacing (12.5 & 25 kHz)
Programmable RF Power (1-25 watts)
 Integral Loud Speaker
 Channel Scanning with Lookback
 Radio Parameters Optimised
 CTCSS/DCS Channel Guard
 DIN Mounting
Tested to MILSPEC Standards 810 C, D & E
 Includes Microphone Cables & Mounting Bracket
Accessories
 A Full Range of Accessories is available



MAXON PM160

Mobile Radio Telephone
 Designed & Engineered For:
 Commercial Mobile RT Applications such as Couriers, Taxis, Haulage
Major Features
 VHF & UHF Operating Frequencies
99 Channels - Wide Band Operation
Programmable Channel Spacing (12.5 & 25 kHz)
Programmable RF Power (1-25 watts)
 Integral Loud Speaker
 Channel Scanning with Lookback
 Radio Parameters Optimised
 CTCSS/DCS Channel Guard
 DIN Mounting
Tested to MILSPEC Standards 810 C, D & E
 Includes Microphone Cables & Mounting Bracket
Accessories
 A Full Range of Accessories is available



MAXON SD125

Data Telemetry Module
 Designed & Engineered For:
 Commercial Telemetry Applications such as Monitoring, Remote On/Off and Traffic Control
Major Features
 VHF & UHF Operating Frequencies
Programmable 16 Channels (internal by dip switch)
Programmable Channel Spacing (12.5 & 25kHz)
Programmable Power (1-5 watts)
 Cast Aluminium Housing with Mounting Holes
 15 Pin Interface Connector
 Dimensions: 30mm (H) x 62mm (W) x 118mm (L)
 Weight: 253 grams
Optional Accessory
 Internal Modem



MAXON SD160 & SD170

Data Telemetry Modules
 Designed & Engineered For:
 Commercial Telemetry Applications such as Monitoring, Remote On/Off and Traffic Control
Major Features
 Synthesised VHF & UHF Operating Frequencies
Programmable 16 Channels (internal by dip switch)
Programmable Channel Spacing (12.5 & 25kHz)
SD160 - 2 watts fixed Power
SD170 - Programmable Power (1-5 watts)
 Operating Voltage 7.2v to 18v DC
 Busy Channel Lockout, Time-out Timer
 Marked Idle, TX Delay, Courtesy Sleep, Power Save
 Cast Aluminium Housing with Mounting Holes
 15 Pin Interface Connector
Dimensions: 32mm (H) x 58mm (W) x 125mm (L)
 Weight: 253 grams
Optional Accessories
 Internal Modem
 GPS Receiver



AURORA HC106

Handheld Calculator
 Designed & Engineered For:
 Personal and Business Use
Major Features
 8 Digit Calculator
 Display
Solar Power
 Plastic Keys
Protective Cover



AURORA HC131plus

Handheld Calculator
 Designed & Engineered For:
 Personal and Business Use
Major Features
 8 Digit Calculator
BIG NUMBER Display
Dual Power (Battery & Solar)
 Rubber Keys
Protective Cover



AURORA HC132plus

Handheld Calculator
 Designed & Engineered For:
 Personal and Business Use
Major Features
 8 Digit Calculator
BIG NUMBER Display
Battery Power
 Rubber Keys
Protective Cover



AURORA DT210

Desktop Calculator
 Designed & Engineered For:
 Personal and Business Use
Major Features
 8 Digit Calculator
BIG NUMBER Display
Dual Power (Battery & Solar)
Change Sign +/- Key



AURORA DT391

Desktop Calculator
 Designed & Engineered For:
 Personal and Business Use
Major Features
 8 Digit Calculator
BIG NUMBER Angled Display
Dual Power (Battery & Solar)
 Plastic Keys
 Auto Power Off



AURORA PR620

Desktop Printer
 Designed & Engineered For:
 Personal and Business Use
Major Features
 12 Digit Calculator
BIG NUMBER Display
 Battery Power
 Black Print, Print/No Print
 Plastic Keys
 Decimal Selector & Rounding
TAX Functions, Mark-up

Business & Scientific Calculators



HEWLETT PACKARD 10bII

Financial Calculator

Designed & Engineered For:
The Economical Choice for Business
Major Features
1 Line x 12 Character LCD Display
Numeric Keypad

Algebraic Entry-Logic System
Memory of 15 Stored Registers
Over 100 Functions - Time Value of Money, Amortization, Discounted Cash Flows, Loans, Savings, Leasing, Algebraic.



HEWLETT PACKARD 12c

Financial Calculator

Designed & Engineered For:
The worlds' largest selling Business Calculator for Real Estate, Banking and Finance Professionals
Major Features
1 Line x 10 Character LCD Display
Numeric Keypad

RPN Entry-Logic System
Memory for 99 Steps
Over 120 Functions - Loans, Leasing, Depreciation, Bond price & yield to maturity, 20 Cash Flows, Amortization, etc.



HEWLETT PACKARD 12c PT

PLATINUM Financial Calculator

Designed & Engineered For:
The worlds' largest selling Business Calculator for Real Estate, Banking and Finance Professionals
Major Features
1 Line x 10 Character LCD Display
Numeric Keypad

Algebraic & RPN Entry-Logic Systems
Memory for 400 Steps
Over 130 Functions - Loans, Leasing, Depreciation, Bond price and yield to maturity, 30 Cash Flows, etc.



HEWLETT PACKARD 12c 25th Anniversary Model

Financial Calculator

Designed & Engineered For:
The worlds' largest selling Business Calculator for Real Estate, Banking and Finance Professionals
Major Features
1 Line x 10 Character LCD Display
Numeric Keypad

Algebraic & RPN Entry-Logic Systems
Memory for 400 Steps
Over 130 Functions - Loans, Leasing, Depreciation, Bond price & yield to maturity, 30 Cash Flows, etc.
Includes Special Edition Leather Carry Case



HEWLETT PACKARD 17bII+

Financial Calculator

Designed & Engineered For:
The High-Powered Professional Business Calculator for Real Estate, Banking and Finance Professionals
Major Features
2 Lines x 22 Character LCD Display
AlphaNumeric Keypad & HP Solve
Clock with Alarm

Calendar with Appointments
Algebraic & RPN Entry-Logic Systems
28k User Memory
Over 250 Functions - Loans, Leasing, Depreciation, Date Arithmetic, Interest Rate Conversions, 3200 Cash Flows, etc.



HEWLETT PACKARD 8s

Scientific Calculator

Designed & Engineered For:
Ideal for Basic Maths and Science Students
Major Features
10+2 2-Line LCD Display
9 Independent Memory

240 Math and Statistical Functions
Scientific & Engineering Notations
Fraction Calculations



HEWLETT PACKARD 9s

Scientific Calculator

Designed & Engineered For:
Ideal for Basic Maths and Science Students
Major Features
10+2 7-segment LCD Display
128 bytes RAM Memory

Math and Statistical Functions
6 Metric Conversions
Scientific & Engineering Notations
Fraction Calculations



HEWLETT PACKARD 30s

Scientific Calculator

Designed & Engineered For:
Ideal for Science Students and Professionals
Major Features
2 Lines x 12 Character LCD Display
Algebraic Entry-Logic System

Over 250 Science & Math Functions
Statistical Analysis, Fractions
Polar Rectangular Conversions

HEWLETT PACKARD 33s

Scientific Calculator

Designed & Engineered For:
Ideal for Science Students and Professionals
Major Features
2 Lines LCD Display
Segment Keypad

Algebraic & RPN Entry-Logic Systems
31k User Memory, HP Solve
27 Independent Memories
Statistical Analysis, Fractions, 40
Physics Constants, Basic N Function



HEWLETT PACKARD 40gs

Graphing Scientific Calculator

Designed & Engineered For:
Ideal for Maths Students
Major Features
131 x 64 pixel LCD Display
Dynamic Split Screen Function

256kb RAM Memory
Memory Expandable to 2mb
600 Built-in Functions
2D Graphing Function
Interactive History of Calculations
Math, Statistical & Graphing Features
Computer Algebraic System (CAS)
Vector Operations
USB/RS232 Serial Port & Infrared
Computer Link
Hard Slide-on Cover



HEWLETT PACKARD 9g

Graphing Scientific Calculator

Designed & Engineered For:
Ideal for Maths Students
Major Features
2 Line x 10 Character Display
400b RAM

Split Screen for Equations & Graphing
Algebraic Entry-logic System
26 Memory Register
Statistics
Base N and Math Functions
Fraction Mode

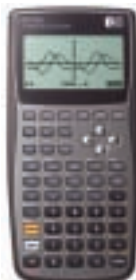


HEWLETT PACKARD 39gs

Graphing Scientific Calculator

Designed & Engineered For:
Ideal for Maths Students
Major Features
131 x 64 pixel LCD Display
256kb RAM Memory

Memory Expandable to 1mb
600 Built-in Functions
2D Graphing Function
Algebraic Entry Logic (without CAS)
Interactive History of Calculations
Statistic Functions
Applets/E-lessons
USB/RS232 Serial Port & Infrared
Hard Slide-on Cover



HEWLETT PACKARD 48gII

Graphing Scientific Calculator

Designed & Engineered For:
Ideal for Engineers and Surveyors
Major Features
131 x 64 pixel LCD Display
256kb RAM Memory

Memory Expandable to 2mb
Over 2,300 Built-in Functions
Graphics & Calculus Combined
2-D/3-D plotting, graphics, algebra, quadratic and polynomial features
3 Input Modes (Textbook, Algebraic or TRPN Entry Logic)
Computer Algebra System (CAS) delivers dynamic symbolic manipulation and numeric solving
Programme Library
USB/RS232 Serial Port & Infrared
Downloads from HP Website
Hard Slide-on Cover



HEWLETT PACKARD 50g

Graphing Scientific Calculator

Designed & Engineered For:
Ideal for Engineers and Surveyors
Major Features
131 x 80 pixel High Contrast LCD Display
2.5mb Memory (512kb RAM & 2mb Flash)

2-D/3-D plotting, graphics, algebra, quadratic and polynomial features
3 Input Modes (Textbook, Algebraic and RPN Entry Logic)
4 Different Font Sizes and Styles
Flexible & Intelligent Editor
Dynamic Algebra and Calculus
Computer Algebra System (CAS) delivers dynamic symbolic manipulation and solving
Inferential and Descriptive Statistics
USB/RS232 Serial Port & Infrared
SD Card Slot
Downloads from HP Website
Premium Carry Pouch

Manufacturer Profiles



Headquartered in Concord, Ontario, Canada, Aastra Technologies Limited for over 100 years has developed and manufactured systems for accessing communication networks. Aastra's product range includes residential and business telephones, screen telephones, PBX, network access terminals and high quality digital video encoders.

AUDIOLINE™

AUDIOLINE branded telephones, answering machines and Personal Mobile Radios are manufactured by DORO AB of Sweden. AUDIOLINE products have been sold in New Zealand since 1995.



Clarity, Inc. which was formerly called Walker Corporation was founded in 1969 in Ringgold, Georgia. The company began manufacturing amplified telephone handsets for public telephones in 1975 and patented its Diod Bridge - technology necessary for amplified handsets in 1977. In 1986, the company was acquired by Plantronics and in 1989 created ClarityPower.



The GIGASONIC CT901 Long Range Cordless Telephone is made by CLT of Taiwan. The CT901 uses unique Split Spectrum Technology in both the 800MHz and 900MHz operating frequencies.



LG-Nortel is a major international supplier to the Telephone System markets with more than US\$2.6 Billion in annual sales. LG-Nortel sells more than US\$200 Million in Keyphone systems per annum and exports to more than 15 countries worldwide. In New Zealand, more *aria* telephone systems have been sold than any other brand.



Plantronics invented the lightweight headset, introducing its first product called the MS50 in 1961, over 40 years ago. With Sales of over US\$235 million and a staff of more than 2,700 with offices in 18 countries, Plantronics is the world's leading headset manufacturer. NASA has used them extensively in their space programmes, including the 1969 moon landing. It was a Plantronics headset that transmitted Neil Armstrong's famous words back to earth, "One small step for man; one giant leap for mankind."

SIEMENS

With the invention of the pointer telegraph by Werner von Siemens, the company was born in 1847, more than 150 years ago. Today, every tenth person around the globe reaches for Siemens technology to make a telephone call. Siemens is a world leader in DECT cordless.



Established in 1999 and headquartered in Fremont, California with offices in Los Angeles and Hong Kong, Vialta Inc., develops, designs and markets unique and innovative communications products. Some of its products include the Beamer 80 Videophone, the Beamer TV Videophone and the Beamer FX Videophone.



Founded in 1972, Aethra is a leader in audio and video conferencing in over 60 countries worldwide. Aethra develops and manufactures ISDN and xDSL products, video and audio conferencing systems and management solutions for audio, video and data services.

AURORA

Founded in 1965, AURORA is a publicly trading company in Taiwan with annual sales exceeding NT\$20 billion. Aurora calculators are sold to millions of consumers in over 90 countries worldwide. AURORA was the inventor of the Dual Power system, BIG NUMBER Display, Long Answer Bar and protective Hardcase designs.

DORO

DORO AB of Sweden was founded in 1974 and is a worldwide supplier of brand name telecommunications products, most notably AUDIOLINE and DORO branded telephones, DECT cordless telephones, answering machines and Caller ID products. DORO has worldwide sales of 1,183,000,000 Swedish Kronas and exports to more than 15 countries.



Founded in 1939, Hewlett Packard is one of the oldest and most respected IT manufacturers in the world. It employs more than 110,000 staff and exports to 120 countries. It is ranked one of the largest companies in the world and sells more than 25,000 products.

maxon

Is one of the world's oldest and leading manufacturers of radio frequency based products. Their cordless telephones are sold throughout the world on an OEM basis and their radio telephone, data telemetry and paging products are available in more than 50 countries around the world.



Polaris is an Australian company that was founded over 20 years ago. Polaris specialises in the importation and distribution of telecommunications products including Headsets, Telephones and Audio Conferencing Systems. The products are sourced from the USA, UK and Italy. It has also developed some of its own products such as the SoundShield acoustical shock protection device.



With over 5.5 million telephones installed in over 125 countries worldwide, Teledex is a world leader in providing high quality telephones to the hospitality industry. Teledex phones feature the MultiX™ Message Wait system. Some of the hotels using Teledex phones include: *Best Western Embassy Suites, Four Seasons, Hilton, Hyatt, Holiday Inn, Marriott, Residence Inn, Ritz Carlton, Radisson, Sheraton, Westin* and most Las Vegas Hotels.



Founded in 1983, VODAVI has been designing, manufacturing and supporting a broad range of telecommunications products for over 20 years. Vodavi manufactures products under contract for major communications companies and telcos such as *LG Electronics, Siemens, Executone, Contel, CTG Canada, GTE and Pacific Telesis*.



Alcatel is one of the world's largest suppliers of communications systems, from submarine cable systems to desktop telephones. Its innovation and dedication to quality is driven by a NZ\$4 billion research, development and engineering programme. More than 2.5 million Alcatel telephones have been sold in New Zealand.

BELCOM

The BELCOM EL210 Conference phone is made by ELEAD of Taiwan, a leading specialty manufacturer. ELEAD was founded in 1983, and specializes in niche market communications products and cellular accessories. The BELCOM MOH CD-PLAYER is made by Atlas Gentech.



GE is the leader in the USA market for both the Corded and Cordless Phone segments and the answering machine segment. GE sells almost 20 million communication products per year in the USA. The GE brand is also strong in parts of Asia and has recently been introduced in Australia and New Zealand.



Konftel Technology is a subsidiary of Konftel Group located in Sweden. Konftel specializes in audio and video conferencing equipment and is estimated to be the second largest manufacturer of audio conferencing equipment in the world.

Oricom

Newly formed in 2003, Oricom is based in Sydney, Australia and sources telecommunications products from "proven manufacturers" around the world. The current manufacturers also supply to international Telcos and retailers such as Swisscom (Switzerland), KPN (The Netherlands), Telia (Sweden), TeleDenmark (Denmark), Telenor (Norway) and Radio Shack in the USA.



Is the world's largest supplier of Audio Conferencing Equipment and also supplies video conferencing equipment. Polycom products are available in more than 50 countries around the world.



THOMSON

Thomson is one of the oldest and largest electronic companies in the world with annual revenues over 8.5 billion euros. Based in Europe, Thomson employs over 59,000 staff with offices in more than 30 countries. Thomson is #1 in the world in many categories including broadcast equipment, satellite set-up boxes, DSL modems, audio visual accessories and home telephones. The company markets products under the Thomson, Alcatel, RCA & GE brands.

vtech

Founded in 1976, VTech has revenues over US\$600 million and invested US\$31 million in Research & Development last financial year. VTech made the world's first 5.8GHz cordless telephone in August 2002 and is a global leader in cordless telephone technology. In the USA, VTech is the market leader in 5.8GHz cordless and has a huge market share with its two brands - VTech and AT&T.

